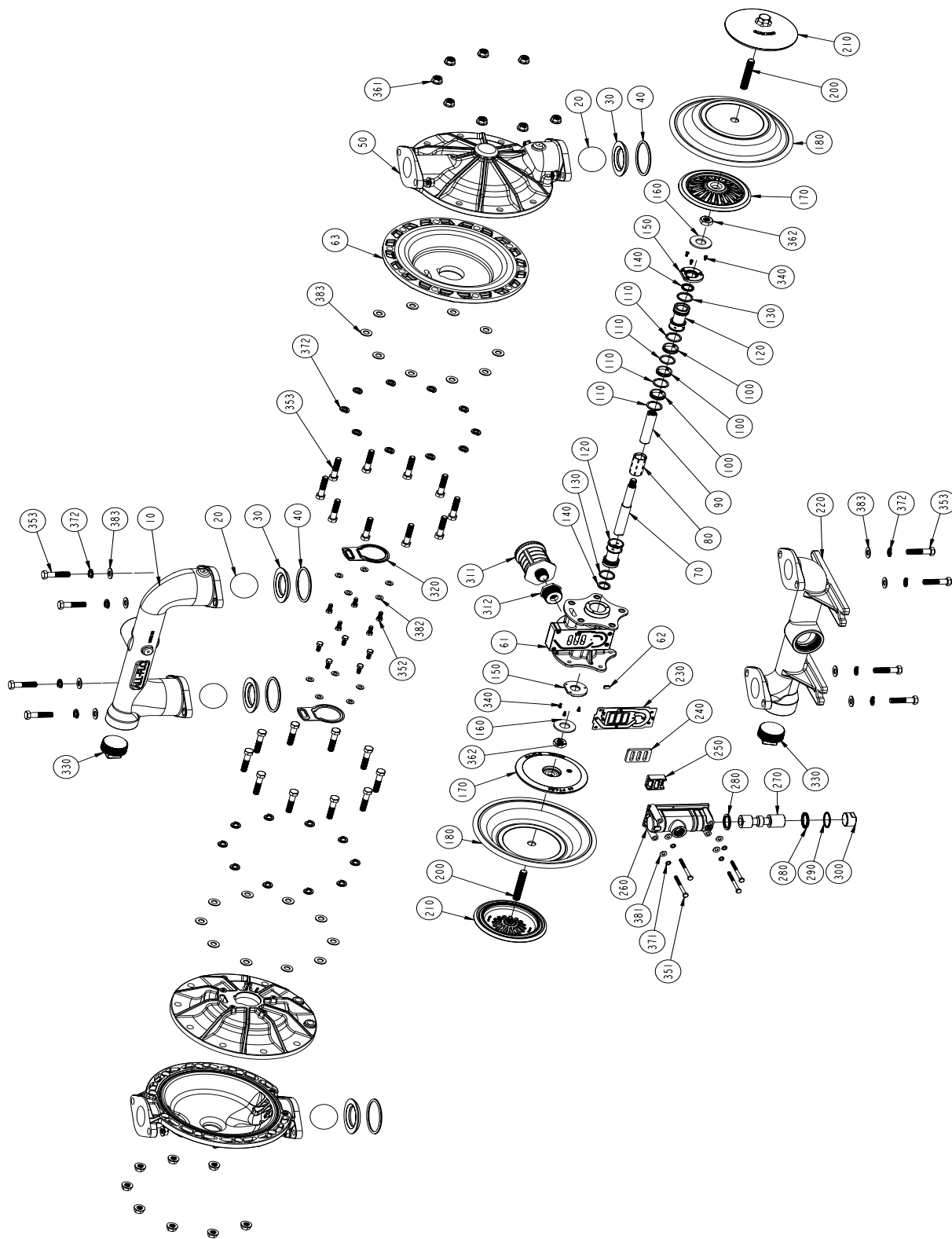


# EXPLODED VIEW & PARTS LIST

## ALUMINUM FULL STROKE, A200-\*AA-\*\*\*\*-\*\*\*



# PARTS LIST - ALUMINUM FULL STROKE, A200-\*AA-\*\*\*\*-\*\*\*

| ITEM      | DESCRIPTION  | QTY | PUMP MODEL          | PART NO.      | MATERIAL        |
|-----------|--|-----|---------------------|---------------|-----------------|
| 10        | DISCHARGE MANIFOLD                                       | 1   | A200-NAA-****-***   | 10512-20-NPT  | Aluminum        |
|           |  |     | A200-BAA-****-***   | 10512-20-BSPT | Aluminum        |
| 20        | BALL   | 4   | A200-***_V**_***    | 11009-13      | Viton®/FKM      |
|           |  |     | A200-***_E**_***    | 11009-15      | EPDM            |
|           |  |     | A200-***_G**_***    | 11009-19      | Geolast®        |
|           |  |     | A200-***_N**_***    | 11009-21      | Buna-N          |
|           |  |     | A200-***_S**_***    | 11009-23      | Santoprene®     |
|           |  |     | A200-***_T**_***    | 11009-45      | PTFE            |
| 30        | VALVE SEAT   | 4   | A200-***_A*_***     | 10925-20      | Aluminum        |
|           |  |     | A200-***_3*_***     | 10925-26      | Stainless Steel |
|           |  |     | A200-***_P*_***     | 10925-39      | Polypropylene   |
|           |  |     | A200-***_Y*_***     | 10925-42      | Nylon           |
| 40        | O-RING, VALVE SEAT                                       | 4   | A200-***_***N_***   | 11917-11      | Nitrile         |
|           |  |     | A200-***_***V_***   | 11917-13      | Viton®/FKM      |
|           |  |     | A200-***_***E_***   | 11917-15      | EPDM            |
|           |  |     | A200-***_***T_***   | 11917-17      | PTFE            |
| 50        | OUTER CHAMBER  | 2   | A200-*AA-****-***   | 10725-20      | Aluminum        |
| 61 & 62   | INTERMEDIATE   | 1   | A200-*A*_****-***   | 11525-20      | Aluminum        |
| 63        | INNER CHAMBER  | 2   | A200-*A*_****-***   | 11805-20      | Aluminum        |
| 70 & 90   | DIAPHRAGM ROD ASSEMBLY (FULL STROKE)                     | 1   | All non-PTFE Models | 35001-00      | Stainless Steel |
| 80        | PILOT SLEEVE   | 1   | All Models          | 10107-31 Δ    | Acetal          |
| 100       | INNER SPACER (PILOT SLEEVE)                              | 3   | All Models          | 10205-40 Δ    | Polypropylene   |
| 110       | O-RING (PILOT SLEEVE)                                    | 4   | All Models          | 11919-16 Δ    | Urethane        |
| 120       | END SPACER (PILOT SLEEVE)                                | 2   | All Models          | 10208-40 Δ    | Polypropylene   |
| 130       | O-RING (END SPACER)                                      | 2   | All Models          | 11919-11 Δ    | Nitrile         |
| 140       | LIP SEAL (DIAPHRAGM ROD)                                 | 2   | All Models          | 12002-76 Δ    | Nitrile         |
| 150       | RETAINING PLATE  | 2   | All Models          | 12717-54      | Nylon           |
| 160       | BUMPER   | 2   | All Models          | 12317-16      | Urethane        |
| 170       | INNER DIAPHRAGM PLATE (FULL STROKE)<br>(NON-PTFE MODELS) | 2   | A200-*A*_****-***   | 11110-20      | Aluminum        |
| 180       | DIAPHRAGM  | 2   | A200-***_N***_***   | 10610-11      | Buna-N          |
|           |  |     | A200-***_V***_***   | 10610-13      | Viton®/FKM      |
|           |  |     | A200-***_E***_***   | 10610-15      | EPDM            |
|           |  |     | A200-***_G***_***   | 10610-19      | Geolast®        |
|           |  |     | A200-***_S***_***   | 10610-23      | Santoprene®     |
| 190       | N/A  |     |                     |               |                 |
| 200 & 210 | OUTER DIAPHRAGM PLATE WITH STUD                          | 2   | A200-*AA-****-***   | 11218-20      | Aluminum        |
| 220       | SUCTION MANIFOLD   | 1   | A200-NAA-****-***   | 11321-20-NPT  | Aluminum        |
|           |  |     | A200-BAA-****-***   | 11321-20-BSPT | Aluminum        |
| 230       | AIR VALVE GASKET   | 1   | All Models          | 12124-19 ‡    | Nitrile         |
| 240       | SHUTTLE PLATE  | 1   | All Models          | 10450-77 ‡    | Ceramic         |
| 250       | SHUTTLE  | 1   | All Models          | 10430-00 ‡    | Special         |
| 260       | AIR VALVE BODY   | 1   | A200-*A*_****-***   | 11618-20 ‡    | Aluminum        |
| 270       | AIR VALVE SPOOL  | 1   | All Models          | 10483-31 ‡    | Acetal          |
| 280       | LIP SEAL (AIR VALVE)                                     | 2   | All Models          | 12003-76 ‡    | Nitrile         |
| 290       | O-RING (AIR VALVE END PLUG)                              | 1   | All Models          | 11913-11 ‡    | Nitrile         |

# PARTS LIST - ALUMINUM FULL STROKE, A200-\*AA-\*\*\*\*-\*\*\*

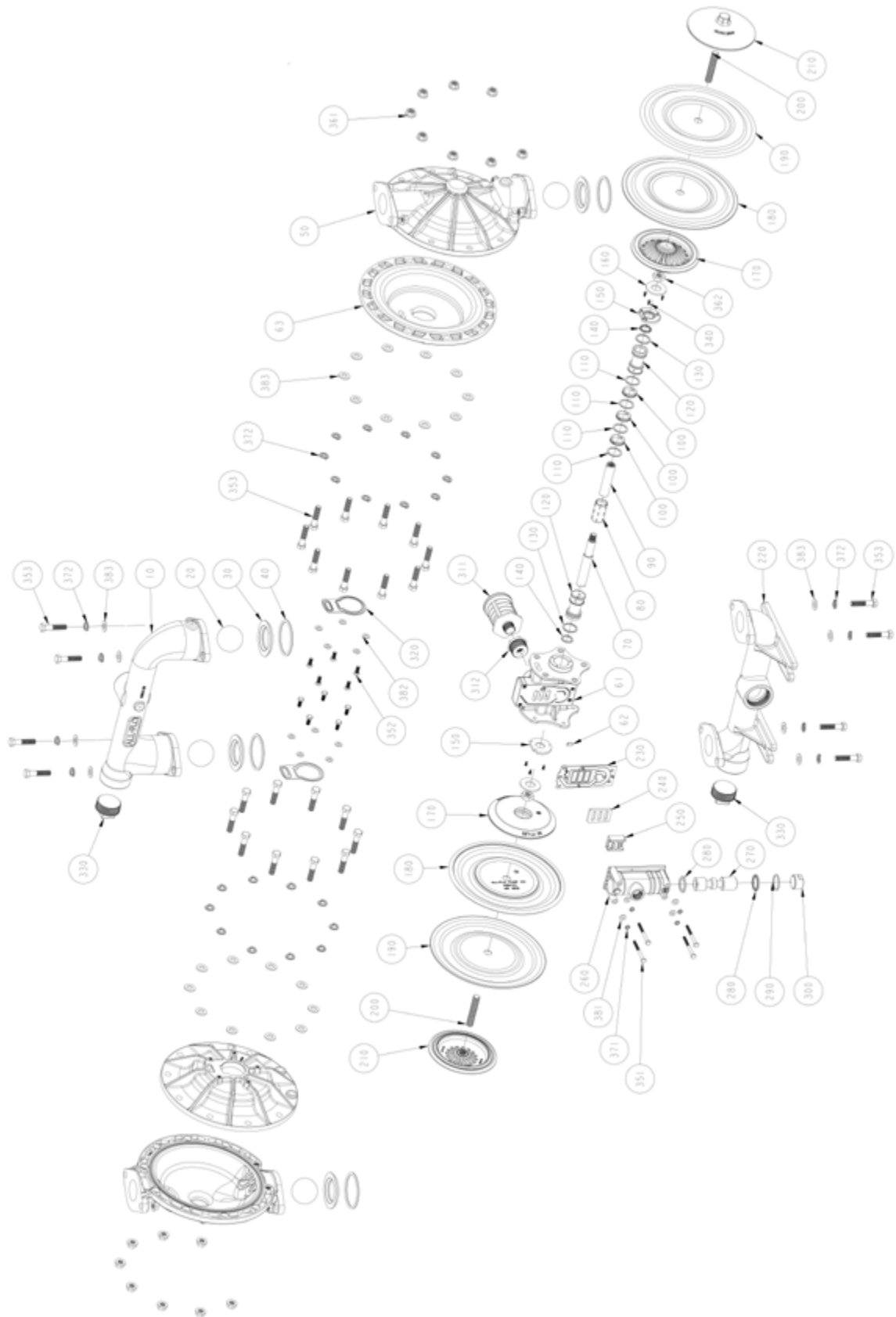
| ITEM    | DESCRIPTION                                       | QTY | PUMP MODEL              | PART NO.      | MATERIAL        |
|---------|---|-----|-------------------------|---------------|-----------------|
| 300     | AIR VALVE END PLUG                                | 1   | A200-*A*-****-***       | 11706-20 ‡    | Aluminum        |
| 311&312 | MUFFLER w/ BUSHING                                | 1   | A200-*A*-****-*0*       | 13013-00      | Polypropylene   |
|         |   |     | Optional                | 13010-00      | Metal           |
| 320     | INNER CHAMBER GASKET                              | 2   | All Models              | 12123-19      | Nitrile         |
| 330     | PIPE PLUG   | 2   | A200-NAA-****-***       | 12260-20-NPT  | Aluminum        |
|         |   |     | A200-BAA-****-***       | 12260-20-BSPT | Aluminum        |
| 340     | SCREW, SELF-LOCKING PHILLIPS (#6-32 X 3/8")       | 6   | All Models              | 12571-26      | Stainless Steel |
| 351     | SCREW, HEX HEAD CAP (1/4"-20 X 3")                | 4   | A200-*A*-****-*0*       | 12516-25      | Plated Steel    |
|         |   |     | A200-*3*-****-*0*       | 12516-26      | Stainless Steel |
| 352     | SCREW, HEX HEAD CAP (5/16"-18 X 3/4")             | 10  | A200-*A*-****-*0*       | 12536-25      | Plated Steel    |
|         |   |     | A200-*3*-****-*0*       | 12536-26      | Stainless Steel |
| 353     | SCREW, HEX HEAD CAP FLANGED<br>(1/2"-13 x 2-1/4") | 28  | A200-*A*-****-*0*       | 12572-225-25  | Plated Steel    |
|         |   |     | A200-*3*-****-*0*       | 12572-225-26  | Stainless Steel |
| 361     | NUT, FLANGE (1/2"-13)                             | 24  | A200-*A*-****-*0*       | 12582-25      | Plated Steel    |
|         |   |     | A200-*3*-****-*0*       | 12582-26      | Stainless Steel |
| 362     | NUT (5/8"-11)                                     | 2   | All Models              | 12579-25      | Plated Steel    |
| 371     | WASHER, LOCK (1/4")                               | 4   | A200-*A*-****-*0*       | 12350-25      | Plated Steel    |
|         |   |     | A200-*3*-****-*0*       | 12350-26      | Stainless Steel |
| 372     | WASHER, SPLIT LOCK (1/2")                         | 28  | A200-*A*-****-*0*       | 12323-25      | Plated Steel    |
|         |   |     | A200-*3*-****-*0*       | 12323-26      | Stainless Steel |
| 381     | WASHER, FLAT (1/4")                               | 4   | A200-*A*-****-*0*       | 12300-25      | Plated Steel    |
|         |   |     | A200-*3*-****-*0*       | 12300-26      | Stainless Steel |
| 382     | WASHER, FLAT (5/16")                              | 10  | A200-*A*-****-*0*       | 12310-25      | Plated Steel    |
|         |   |     | A200-*3*-****-*0*       | 12310-26      | Stainless Steel |
| 383     | WASHER (1/2")                                     | 28  | A200-*A*-****-*0*       | 12306-25      | Plated Steel    |
|         |   |     | A200-*3*-****-*0*       | 12306-26      | Stainless Steel |
| 390     | N/A   |     |                         |               |                 |
| 400     | N/A   |     |                         |               |                 |
|         | Magnalube .75 OZ.                                 |     | As Required, All Models | 13404-00      | Grease          |

\* Any Character

‡ , Δ Only sold as part of assembly

| ASSEMBLY PART NUMBERS  | PUMP MODEL        | PART NO.  | MATERIAL |
|--|-------------------|-----------|----------|
| ‡ AIR VALVE ASSEMBLY<br>230, 240, 250, 260, 270, 280, 290, 300 | A200-*A*-****-*** | AMK-200-A | Various  |
| Δ PILOT VALVE ASSEMBLY<br>80, 100, 110, 120, 130, 140          | A200-*A*-****-*** | APK-200-A | Various  |

# ALUMINUM PTFE SHORT STROKE, A200-\*AA-T\*\*\*-\*\*\*



# PARTS LIST - ALUMINUM PTFE SHORT STROKE, A200-\*AA-T\*\*\*-\*\*\*

| ITEM      | DESCRIPTION   | QTY | PUMP MODEL         | PART NO.      | MATERIAL        |
|-----------|---|-----|--------------------|---------------|-----------------|
| 10        | DISCHARGE MANIFOLD                                    | 1   | A200-NAA-****-***  | 10512-20-NPT  | Aluminum        |
|           |   |     | A200-BAA-****-***  | 10512-20-BSPT | Aluminum        |
| 20        | BALL  | 4   | A200-***-*V**_***  | 11009-13      | Viton®/FKM      |
|           |   |     | A200-***-*E**_***  | 11009-15      | EPDM            |
|           |   |     | A200-***-*G**_***  | 11009-19      | Geolast®        |
|           |   |     | A200-***-*N**_***  | 11009-21      | Buna-N          |
|           |   |     | A200-***-*S**_***  | 11009-23      | Santoprene®     |
|           |   |     | A200-***-*T**_***  | 11009-45      | PTFE            |
| 30        | VALVE SEAT  | 4   | A200-***-**A*_***  | 10925-20      | Aluminum        |
|           |   |     | A200-***-**3*_***  | 10925-26      | Stainless Steel |
|           |   |     | A200-****-**P*_*** | 10925-39      | Polypropylene   |
|           |   |     | A200-****-**Y*_*** | 10925-42      | Nylon           |
| 40        | O-RING, VALVE SEAT                                    | 4   | A200-***-***N-***  | 11917-11      | Nitrile         |
|           |   |     | A200-***-***V-***  | 11917-13      | Viton®/FKM      |
|           |   |     | A200-***-***E-***  | 11917-15      | EPDM            |
|           |   |     | A200-****-***T-*** | 11917-17      | PTFE            |
| 50        | OUTER CHAMBER   | 2   | A200-*AA-****-***  | 10725-20      | Aluminum        |
| 61 & 62   | INTERMEDIATE  | 1   | A200-*A*-****-***  | 11525-20      | Aluminum        |
| 63        | INNER CHAMBER   | 2   | A200-*A*-****-***  | 11805-20      | Aluminum        |
| 70 & 90   | DIAPHRAGM ROD ASSEMBLY (SHORT STROKE)                 | 1   | A200-***-T***-***  | 35002-00      | Stainless Steel |
| 80        | PILOT SLEEVE  | 1   | All Models         | 10107-31 Δ    | Acetal          |
| 100       | INNER SPACER (PILOT SLEEVE)                           | 3   | All Models         | 10205-40 Δ    | Polypropylene   |
| 110       | O-RING (PILOT SLEEVE)                                 | 4   | All Models         | 11919-16 Δ    | Urethane        |
| 120       | END SPACER (PILOT SLEEVE)                             | 2   | All Models         | 10208-40 Δ    | Polypropylene   |
| 130       | O-RING (END SPACER)                                   | 2   | All Models         | 11919-11 Δ    | Nitrile         |
| 140       | LIP SEAL (DIAPHRAGM ROD)                              | 2   | All Models         | 12002-76 Δ    | Nitrile         |
| 150       | RETAINING PLATE                                       | 2   | All Models         | 12717-54      | Nylon           |
| 160       | BUMPER  | 2   | All Models         | 12317-16      | Urethane        |
| 170       | INNER DIAPHRAGM PLATE (SHORT STROKE)<br>(PTFE MODELS) | 2   | A200-*A*-T***-***  | 11113-20      | Aluminum        |
| 180       | DIAPHRAGM (BACK UP)                                   | 2   | A200-***-T***-***  | 10611-23      | Santoprene®     |
| 190       | OVERLAY (DIAPHRAGM)                                   | 2   | A200-***-T***-***  | 11408-59      | PTFE            |
| 200 & 210 | OUTER DIAPHRAGM PLATE WITH STUD                       | 2   | A200-*AA-****-***  | 11218-20      | Aluminum        |
| 220       | SUCTION MANIFOLD                                      | 1   | A200-NAA-****-***  | 11321-20-NPT  | Aluminum        |
|           |   |     | A200-BAA-****-***  | 11321-20-BSPT | Aluminum        |
| 230       | AIR VALVE GASKET                                      | 1   | All Models         | 12124-19 ‡    | Nitrile         |
| 240       | SHUTTLE PLATE   | 1   | All Models         | 10450-77 ‡    | Ceramic         |
| 250       | SHUTTLE   | 1   | All Models         | 10430-00 ‡    | Special         |
| 260       | AIR VALVE BODY  | 1   | A200-*A*-****-***  | 11618-20 ‡    | Aluminum        |
| 270       | AIR VALVE SPOOL                                       | 1   | All Models         | 10483-31 ‡    | Acetal          |
| 280       | LIP SEAL (AIR VALVE)                                  | 2   | All Models         | 12003-76 ‡    | Nitrile         |
| 290       | O-RING (AIR VALVE END PLUG)                           | 1   | All Models         | 11913-11 ‡    | Nitrile         |

# PARTS LIST - ALUMINUM PTFE SHORT STROKE, A200-\*AA-T\*\*\*-\*\*\*

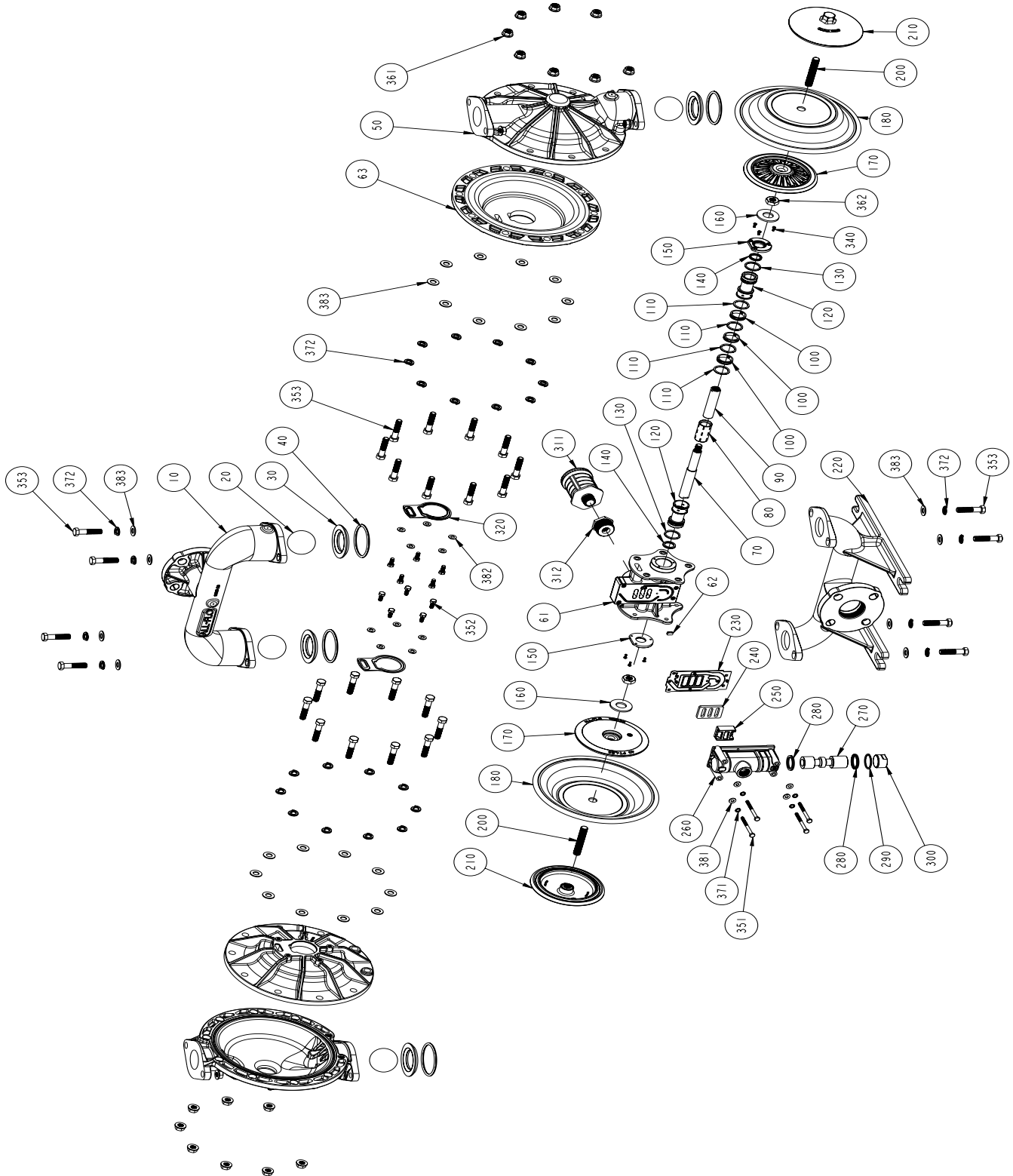
| ITEM    | DESCRIPTION                                       | QTY | PUMP MODEL                             | PART NO.                      | MATERIAL                        |
|---------|---|-----|--|-------------------------------|---------------------------------|
| 300     | AIR VALVE END PLUG                                | 1   | A200-*A*-****-***                      | 11706-20 ‡                    | Aluminum                        |
| 311&312 | MUFFLER w/ BUSHING                                | 1   | Standard<br>Optional                   | 13013-00<br>13010-00          | Polypropylene<br>Metal          |
| 320     | INNER CHAMBER GASKET                              | 2   | All Models                             | 12123-19                      | Nitrile                         |
| 330     | PIPE PLUG   | 2   | A200-NAA-****-***<br>A200-BAA-****-*** | 12260-20-NPT<br>12260-20-BSPT | Aluminum<br>Aluminum            |
| 340     | SCREW, SELF-LOCKING PHILLIPS (#6-32 X 3/8")       | 6   | All Models                             | 12571-26                      | Stainless Steel                 |
| 351     | SCREW, HEX HEAD CAP (1/4"-20 X 3")                | 4   | A200-**A-****-*0*<br>A200-**3-****-*0* | 12516-25<br>12516-26          | Plated Steel<br>Stainless Steel |
| 352     | SCREW, HEX HEAD CAP (5/16"-18 X 3/4")             | 10  | A200-**A-****-*0*<br>A200-**3-****-*0* | 12536-25<br>12536-26          | Plated Steel<br>Stainless Steel |
| 353     | SCREW, HEX HEAD CAP FLANGED<br>(1/2"-13 x 2-1/4") | 28  | A200-**A-****-*0*<br>A200-**3-****-*0* | 12572-225-25<br>12572-225-26  | Plated Steel<br>Stainless Steel |
| 361     | NUT, FLANGE (1/2"-13)                             | 24  | A200-**A-****-*0*<br>A200-**3-****-*0* | 12582-25<br>12582-26          | Plated Steel<br>Stainless Steel |
| 362     | NUT (5/8"-11)                                     | 2   | All Models                             | 12579-25                      | Plated Steel                    |
| 371     | WASHER, LOCK (1/4")                               | 4   | A200-**A-****-*0*<br>A200-**3-****-*0* | 12350-25<br>12350-26          | Plated Steel<br>Stainless Steel |
| 372     | WASHER, SPLIT LOCK (1/2")                         | 28  | A200-**A-****-*0*<br>A200-**3-****-*0* | 12323-25<br>12323-26          | Plated Steel<br>Stainless Steel |
| 381     | WASHER, FLAT (1/4")                               | 4   | A200-**A-****-*0*<br>A200-**3-****-*0* | 12300-25<br>12300-26          | Plated Steel<br>Stainless Steel |
| 382     | WASHER, FLAT (5/16")                              | 10  | A200-**A-****-*0*<br>A200-**3-****-*0* | 12310-25<br>12310-26          | Plated Steel<br>Stainless Steel |
| 383     | WASHER (1/2")                                     | 28  | A200-**A-****-*0*<br>A200-**3-****-*0* | 12306-25<br>12306-26          | Plated Steel<br>Stainless Steel |
| 390     | N/A   |     |  |                               |                                 |
| 400     | N/A   |     |  |                               |                                 |
|         | Magnalube .75 OZ.                                 |     | As Required, All Models                | 13404-00                      | Grease                          |

\* Any Character

‡ , Δ Only sold as part of assembly

| ASSEMBLY PART NUMBERS  | PUMP MODEL        | PART NO.  | MATERIAL |
|--|-------------------|-----------|----------|
| ‡ AIR VALVE ASSEMBLY<br>230, 240, 250, 260, 270, 280, 290, 300 | A200-*A*-****-*** | AMK-200-A | Various  |
| Δ PILOT VALVE ASSEMBLY<br>80, 100, 110, 120, 130, 140          | A200-*A*-****-*** | APK-200-A | Various  |

# STAINLESS STEEL FULL STROKE, A200-\*\*3-\*\*\*\*-\*\*\*



# PARTS LIST - STAINLESS STEEL FULL STROKE, A200-\*\*3-\*\*\*\*-\*\*\*

| ITEM      | DESCRIPTION  | QTY | PUMP MODEL          | PART NO.       | MATERIAL        |
|-----------|--|-----|---------------------|----------------|-----------------|
| 10        | DISCHARGE MANIFOLD (ANSI/DIN FLANGE)<br>(COMBINATION ANSI/DIN FLANGE & NPT )<br>(COMBINATION ANSI/DIN FLANGE & BSP ) | 1   | A200-F*3-****-***   | 10515-26-BLANK | Stainless Steel |
|           |  |     | A200-C*3-****-***   | 10515-26-NPT   | Stainless Steel |
|           |  |     | A200-E*3-****-***   | 10515-26-BSPT  | Stainless Steel |
| 20        | BALL   | 4   | A200-***-V**_***    | 11009-13       | Viton®/FKM      |
|           |  |     | A200-***-E**_***    | 11009-15       | EPDM            |
|           |  |     | A200-***-G**_***    | 11009-19       | Geolast®        |
|           |  |     | A200-***-N**_***    | 11009-21       | Buna-N          |
|           |  |     | A200-***-S**_***    | 11009-23       | Santoprene®     |
|           |  |     | A200-****-T**_***   | 11009-45       | PTFE            |
| 30        | VALVE SEAT   | 4   | A200-***-**A*_***   | 10925-20       | Aluminum        |
|           |  |     | A200-***-**3*_***   | 10925-26       | Stainless Steel |
|           |  |     | A200-***-**P*_***   | 10925-39       | Polypropylene   |
|           |  |     | A200-***-**Y*_***   | 10925-42       | Nylon           |
| 40        | O-RING, VALVE SEAT   | 4   | A200-***-***N-***   | 11917-11       | Nitrile         |
|           |  |     | A200-***-***V-***   | 11917-13       | Viton®/FKM      |
|           |  |     | A200-***-***E-***   | 11917-15       | EPDM            |
|           |  |     | A200-***-***T-***   | 11917-17       | PTFE            |
| 50        | OUTER CHAMBER  | 2   | A200-**3-****-***   | 10725-26       | Stainless Steel |
| 61 & 62   | INTERMEDIATE   | 1   | A200-*A*-****-***   | 11525-20       | Aluminum        |
|           |  |     | A200-*33-****-***   | 11525-26       | Stainless Steel |
| 63        | INNER CHAMBER  | 2   | A200-*A*-****-***   | 11805-20       | Aluminum        |
|           |  |     | A200-*33-****-***   | 11805-26       | Stainless Steel |
| 70 & 90   | DIAPHRAGM ROD ASSEMBLY (FULL STROKE)   | 1   | All non-PTFE Models | 35001-00       | Stainless Steel |
| 80        | PILOT VALVE  | 1   | All Models          | 10107-31 Δ     | Acetal          |
| 100       | INNER SPACER (PILOT SLEEVE)  | 3   | All Models          | 10205-40 Δ     | Polypropylene   |
| 110       | O-RING (PILOT SLEEVE)  | 4   | All Models          | 11919-16 Δ     | Urethane        |
| 120       | END SPACER (PILOT SLEEVE)  | 2   | All Models          | 10208-40 Δ     | Polypropylene   |
| 130       | O-RING (END SPACER)  | 2   | All Models          | 11919-11 Δ     | Nitrile         |
| 140       | LIP SEAL (DIAPHRAGM ROD)   | 2   | All Models          | 12002-76 Δ     | Nitrile         |
| 150       | RETAINING PLATE  | 2   | All Models          | 12717-54       | Nylon           |
| 160       | BUMPER   | 2   | All Models          | 12317-16       | Urethane        |
| 170       | INNER DIAPHRAGM PLATE, (FULL STROKE)<br>(NON-PTFE MODELS)  | 2   | A200-*A*-****-***   | 11110-20       | Aluminum        |
|           |  |     | A200-*33-****-***   | 11110-26       | Stainless Steel |
| 180       | DIAPHRAGM  | 2   | A200-***-N***_***   | 10610-11       | Buna-N          |
|           |  |     | A200-***-V***_***   | 10610-13       | Viton®/FKM      |
|           |  |     | A200-***-E***_***   | 10610-15       | EPDM            |
|           |  |     | A200-***-G***_***   | 10610-19       | Geolast®        |
|           |  |     | A200-***-S***_***   | 10610-23       | Santoprene®     |
| 190       | N/A  |     |                     |                |                 |
| 200 & 210 | OUTER DIAPHRAGM PLATE W/ STUD  | 2   | A200-**3-****-***   | 11218-26       | Stainless Steel |
| 220       | SUCTION MANIFOLD (ANSI/DIN FLANGE)<br>(COMBINATION ANSI/DIN FLANGE & NPT )<br>(COMBINATION ANSI/DIN FLANGE & BSP )   | 1   | A200-F*3-****-***   | 11325-26-BLANK | Stainless Steel |
|           |  |     | A200-C*3-****-***   | 11325-26-NPT   | Stainless Steel |
|           |  |     | A200-E*3-****-***   | 11325-26-BSPT  | Stainless Steel |
| 230       | AIR VALVE GASKET   | 1   | All Models          | 12124-19 ‡     | Nitrile         |
| 240       | SHUTTLE PLATE  | 1   | All Models          | 10450-77 ‡     | Ceramic         |
| 250       | SHUTTLE  | 1   | All Models          | 10430-00 ‡     | Special         |
| 260       | AIR VALVE BODY   | 1   | A200-*A*-****-***   | 11618-20 ‡     | Aluminum        |
|           |  |     | A200-*33-****-***   | 11618-26 ‡     | Stainless Steel |



# PARTS LIST - STAINLESS STEEL FULL STROKE, A200-\*\*3-\*\*\*\*-\*\*\*

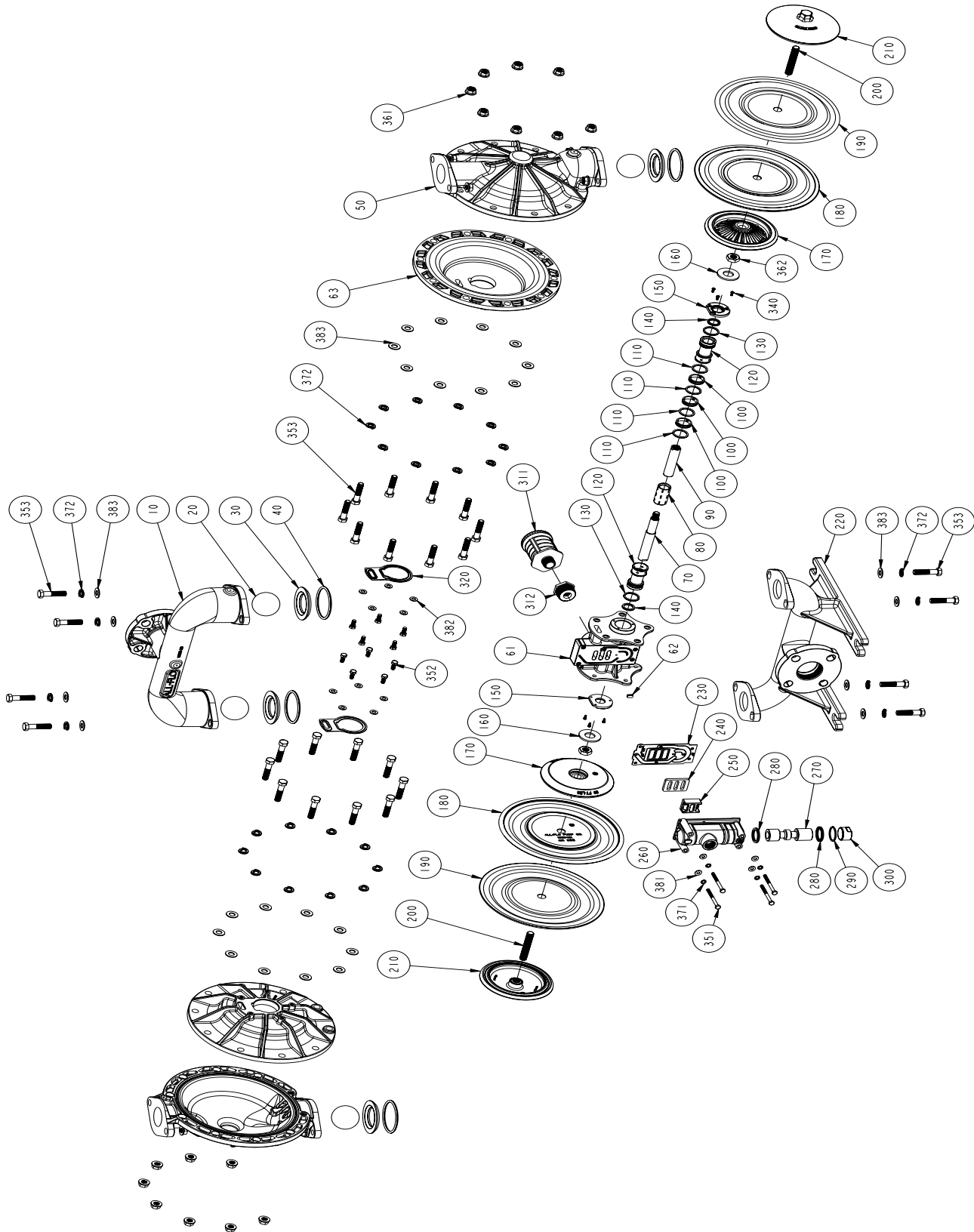
| ITEM      | DESCRIPTION                            | QTY | PUMP MODEL                             | PART NO.                 | MATERIAL                    |
|-----------|--|-----|--|--------------------------|-----------------------------|
| 270       | AIR VALVE SPOOL                        | 1   | All Models                             | 10483-31 ‡               | Acetal                      |
| 280       | LIP SEAL (AIR VALVE)                   | 2   | All Models                             | 12003-76 ‡               | Nitrile                     |
| 290       | O-RING (AIR VALVE END PLUG)            | 1   | All Models                             | 11913-11 ‡               | Nitrile                     |
| 300       | AIR VALVE END PLUG                     | 1   | A200-*A*-****-***<br>A200-*33-****-*** | 11706-20 ‡<br>11706-26 ‡ | Aluminum<br>Stainless Steel |
| 311 & 312 | MUFFLER w/ BUSHING                     | 1   | Standard<br>Optional                   | 13013-00<br>13010-00     | Polypropylene<br>Metal      |
| 320       | INNER CHAMBER GASKET                   | 2   | All Models                             | 12123-19                 | Nitrile                     |
| 330       | N/A                                    |     |  |                          |                             |
| 340       | SCREW, PHILLIPS (#6-32 X 3/8")         | 6   | All Models                             | 12571-26                 | Stainless Steel             |
| 351       | SCREW, HEX HEAD CAP (1/4"-20 X 3")     | 4   | Standard                               | 12516-26                 | Stainless Steel             |
| 352       | SCREW, HEX HEAD CAP (5/16"-18 X 3/4")  | 10  | Standard                               | 12536-26                 | Stainless Steel             |
| 353       | SCREW, HEX HEAD CAP (1/2"-13 x 2-1/4") | 28  | Standard                               | 12572-225-26             | Stainless Steel             |
| 361       | NUT, FLANGE (1/2"-13)                  | 24  | Standard                               | 12582-26                 | Stainless Steel             |
| 362       | NUT (5/8"-11)                          | 2   | All Models                             | 12579-25                 | Plated Steel                |
| 371       | WASHER, LOCK (1/4")                    | 4   | Standard                               | 12350-26                 | Stainless Steel             |
| 372       | WASHER, SPLIT LOCK (1/2")              | 28  | Standard                               | 12323-26                 | Stainless Steel             |
| 381       | WASHER (1/4")                          | 4   | Standard                               | 12300-26                 | Stainless Steel             |
| 382       | WASHER (5/16")                         | 10  | Standard                               | 12310-26                 | Stainless Steel             |
| 383       | WASHER (1/2")                          | 28  | Standard                               | 12306-26                 | Stainless Steel             |
| 390       | N/A                                    |     |  |                          |                             |
| 400       | N/A                                    |     |  |                          |                             |
|           | Magnalube .75 OZ.                      |     | As Required, All Models                | 13404-00                 | Grease                      |

\* Any Character

‡ , Δ Only sold as part of assembly

| ASSEMBLY PART NUMBERS                  | PUMP MODEL        | PART NO.  | MATERIAL |
|--|-------------------|-----------|----------|
| ‡ AIR VALVE ASSEMBLY                   | A200-*A*-****-*** | AMK-200-A | Various  |
| 230, 240, 250, 260, 270, 280, 290, 300 | A200-*3*-****-*** | AMK-200-3 | Various  |
| Δ PILOT VALVE ASSEMBLY                 | A200-*A*-****-*** | APK-200-A | Various  |
| 80, 100, 110, 120, 130, 140            | A200-*3*-****-*** | APK-200-3 | Various  |

# STAINLESS STEEL PTFE SHORT STROKE, A200-\*\*-3-T\*\*\*-\*\*\*



# PARTS LIST - STAINLESS STEEL SHORT STROKE, A200-\*\*3-T\*\*\*-\*\*\*

| ITEM      | DESCRIPTION  | QTY | PUMP MODEL        | PART NO.       | MATERIAL        |
|-----------|--|-----|-------------------|----------------|-----------------|
| 10        | DISCHARGE MANIFOLD (ANSI/DIN FLANGE)<br>(COMBINATION ANSI/DIN FLANGE & NPT )<br>(COMBINATION ANSI/DIN FLANGE & BSP ) | 1   | A200-F*3-****_*** | 10515-26-BLANK | Stainless Steel |
|           |  |     | A200-C*3-****_*** | 10515-26-NPT   | Stainless Steel |
|           |  |     | A200-E*3-****_*** | 10515-26-BSPT  | Stainless Steel |
| 20        | BALL   | 4   | A200-***_V**_***  | 11009-13       | Viton®/FKM      |
|           |  |     | A200-***_E**_***  | 11009-15       | EPDM            |
|           |  |     | A200-***_G**_***  | 11009-19       | Geolast®        |
|           |  |     | A200-***_N**_***  | 11009-21       | Buna-N          |
|           |  |     | A200-***_S**_***  | 11009-23       | Santoprene®     |
|           |  |     | A200-***_T**_***  | 11009-45       | PTFE            |
| 30        | VALVE SEAT   | 4   | A200-***_A*_***   | 10925-20       | Aluminum        |
|           |  |     | A200-***_**3*_*** | 10925-26       | Stainless Steel |
|           |  |     | A200-***_**P*_*** | 10925-39       | Polypropylene   |
|           |  |     | A200-***_**Y*_*** | 10925-42       | Nylon           |
| 40        | O-RING, VALVE SEAT   | 4   | A200-***_***N_*** | 11917-11       | Nitrile         |
|           |  |     | A200-***_***V_*** | 11917-13       | Viton®/FKM      |
|           |  |     | A200-***_***E_*** | 11917-15       | EPDM            |
|           |  |     | A200-***_***T_*** | 11917-17       | PTFE            |
| 50        | OUTER CHAMBER  | 2   | A200-**3-****_*** | 10725-26       | Stainless Steel |
| 61 & 62   | INTERMEDIATE   | 1   | A200-*A*_****_*** | 11525-20       | Aluminum        |
|           |  |     | A200-*33-****_*** | 11525-26       | Stainless Steel |
| 63        | INNER CHAMBER  | 2   | A200-*A*_****_*** | 11805-20       | Aluminum        |
|           |  |     | A200-*33-****_*** | 11805-26       | Stainless Steel |
| 70 & 90   | DIAPHRAGM ROD ASSEMBLY (SHORT STROKE)  | 1   | A200-***_T***_*** | 35002-00       | Stainless Steel |
| 80        | PILOT VALVE  | 1   | All Models        | 10107-31 Δ     | Acetal          |
| 100       | INNER SPACER, PILOT SLEEVE   | 3   | All Models        | 10205-40 Δ     | Polypropylene   |
| 110       | O-RING (PILOT SLEEVE)  | 4   | All Models        | 11919-16 Δ     | Urethane        |
| 120       | END SPACER, PILOT SLEEVE   | 2   | All Models        | 10208-40 Δ     | Polypropylene   |
| 130       | O-RING (END SPACER)  | 2   | All Models        | 11919-11 Δ     | Nitrile         |
| 140       | LIP SEAL (DIAPHRAGM ROD)   | 2   | All Models        | 12002-76 Δ     | Nitrile         |
| 150       | RETAINING PLATE  | 2   | All Models        | 12717-54       | Nylon           |
| 160       | BUMPER   | 2   | All Models        | 12317-16       | Urethane        |
| 170       | INNER DIAPHRAGM PLATE (SHORT STROKE)<br>(PTFE MODELS)  | 2   | A200-*A*_T***_*** | 11113-20       | Aluminum        |
|           |  |     | A200-*33-T***_*** | 11113-26       | Stainless Steel |
| 180       | DIAPHRAGM (BACK UP)  | 2   | A200-***_T***_*** | 10611-23       | Santoprene®     |
| 190       | OVERLAY (DIAPHRAGM)  | 2   | A200-***_T***_*** | 11408-59       | PTFE            |
| 200 & 210 | OUTER DIAPHRAGM PLATE W/ STUD  | 2   | A200-**3-****_*** | 11218-26       | Stainless Steel |
| 220       | SUCTION MANIFOLD<br>(COMBINATION ANSI/DIN FLANGE & NPT )<br>(COMBINATION ANSI/DIN FLANGE & BSP )                     | 1   | A200-F*3-****_*** | 11325-26-BLANK | Stainless Steel |
|           |  |     | A200-C*3-****_*** | 11325-26-NPT   | Stainless Steel |
|           |  |     | A200-E*3-****_*** | 11325-26-BSPT  | Stainless Steel |
| 230       | AIR VALVE GASKET   | 1   | All Models        | 12124-19 ‡     | Nitrile         |
| 240       | SHUTTLE PLATE  | 1   | All Models        | 10450-77 ‡     | Ceramic         |
| 250       | SHUTTLE  | 1   | All Models        | 10430-00 ‡     | Special         |
| 260       | AIR VALVE BODY   | 1   | A200-*A*_****_*** | 11618-20 ‡     | Aluminum        |
|           |  |     | A200-*33-****_*** | 11618-26 ‡     | Stainless Steel |
| 270       | AIR VALVE SPOOL  | 1   | All Models        | 10483-31 ‡     | Acetal          |
| 280       | LIP SEAL (AIR VALVE)   | 2   | All Models        | 12003-76 ‡     | Nitrile         |

# PARTS LIST - STAINLESS STEEL SHORT STROKE, A200-\*\*3-T\*\*\*-\*\*\*

| ITEM      | DESCRIPTION                            | QTY | PUMP MODEL                  | PART NO.     | MATERIAL        |
|-----------|--|-----|-----------------------------|--------------|-----------------|
| 290       | O-RING (AIR VALVE END PLUG)            | 1   | All Models                  | 11913-11 ‡   | Nitrile         |
| 300       | AIR VALVE END PLUG                     | 1   | A200-*A*_*_*_*_*_*_*_*_*_*  | 11706-20 ‡   | Aluminum        |
|           |  |     | A200-*33*_*_*_*_*_*_*_*_*_* | 11706-26 ‡   | Stainless Steel |
| 311 & 312 | MUFFLER w/ BUSHING                     | 1   | Standard                    |              |                 |
|           | 13013-00 Polypropylene                 |     | Optional                    | 13010-00     | Metal           |
| 320       | INNER CHAMBER GASKET                   | 2   | All Models                  | 12123-19     | Nitrile         |
| 330       | N/A                                    |     |                             |              |                 |
| 340       | SCREW, PHILLIPS (#6-32 X 3/8")         | 6   | All Models                  | 12571-26     | Stainless Steel |
| 351       | SCREW, HEX HEAD CAP (1/4"-20 X 3")     | 4   | Standard                    | 12516-26     | Stainless Steel |
| 352       | SCREW, HEX HEAD CAP (5/16"-18 X 3/4")  | 10  | Standard                    | 12536-26     | Stainless Steel |
| 353       | SCREW, HEX HEAD CAP (1/2"-13 x 2-1/4") | 28  | Standard                    | 12572-225-26 | Stainless Steel |
| 361       | NUT, FLANGE (1/2"-13)                  | 24  | Standard                    | 12582-26     | Stainless Steel |
| 362       | NUT (5/8"-11)                          | 2   | All Models                  | 12579-25     | Plated Steel    |
| 371       | WASHER, LOCK (1/4")                    | 4   | Standard                    | 12350-26     | Stainless Steel |
| 372       | WASHER, SPLIT LOCK (1/2")              | 28  | Standard                    | 12323-26     | Stainless Steel |
| 381       | WASHER (1/4")                          | 4   | Standard                    | 12300-26     | Stainless Steel |
| 382       | WASHER (5/16")                         | 10  | Standard                    | 12310-26     | Stainless Steel |
| 383       | WASHER (1/2")                          | 28  | Standard                    | 12306-26     | Stainless Steel |
| 390       | N/A                                    |     |                             |              |                 |
| 400       | N/A                                    |     |                             |              |                 |
|           | Magnalube .75 OZ.                      |     | As Required, All Models     | 13404-00     | Grease          |

\* Any Character

‡ , Δ Only sold as part of assembly

| ASSEMBLY PART NUMBERS                  | PUMP MODEL                  | PART NO.  | MATERIAL |
|--|-----------------------------|-----------|----------|
| ‡ AIR VALVE ASSEMBLY                   | A200-*A*_*_*_*_*_*_*_*_*_*  | AMK-200-A | Various  |
| 230, 240, 250, 260, 270, 280, 290, 300 | A200-*33*_*_*_*_*_*_*_*_*_* | AMK-200-3 | Various  |
| Δ PILOT VALVE ASSEMBLY                 | A200-*A*_*_*_*_*_*_*_*_*_*  | APK-200-A | Various  |
| 80, 100, 110, 120, 130, 140            | A200-*33*_*_*_*_*_*_*_*_*_* | APK-200-3 | Various  |