

ABOUT US

Thank you for choosing Coxreels!

Entering into our 10th decade under the third generation of family ownership and operation, we are proud to manufacture the industry's highest quality and widest variety of hose, cord, and cable reels. Our products are called on to be the most reliable product built to effectively perform in various settings and applications.

OUR MISSION

WE LEAD THE INDUSTRY IN QUALITY & INNOVATION

We know that there can be no compromise when you live the philosophy of building the best! Every decision regarding our product design is made with one unwavering goal: to make the product the very best it can be — no exceptions.

PROFESSIONAL GRADE FEATURES



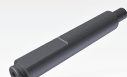
CPC™ POWDER COAT

Our blue powder coat finish is long lasting, chip resistant, and rust inhibiting.



BRASS SWIVEL

External fluid path, machined from solid brass, full flow, swivel for simple seal maintenance.



STEEL AXLE

1" solid steel axle and lubricated bearings for extra strength and durability. Not a hollow tube & no fluid travels through it.



SUPER HUB™

1/4" steel frame and support arm with dual axle support with SUPER HUB™ for increased strength and durability.



COMPONENT COVER

External CPC™ powder coated steel components cover for simple slip ring routine maintenance.



EZ-COIL® EQUIPPED

A patented safety system that retracts up to 80% slower than conventional reels.



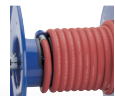
CNC SPUN DISCS

All steel rolled edges and ribbed discs for added safety, strength, and durability.



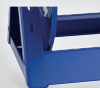
CARTRIDGE MOTOR

Enclosed factory tuned and matched cartridge style motor for safe and easy replacement.



LOW PROFILE RISER

Low profile riser with open drum slot allows for smooth, even hose wraps that will not pinch or bind your hose. **NO HUMP!**



ALL WELDED STEEL "A" FRAME

All welded steel "A" frame for strength & durability. **NOT BOLTED!**



2 YEAR WARRANTY

Coxreels proudly stands behind our reels as they are built to last!



USA MADE, QUALITY & SUPPORT

We take great pride in designing, building & supplying the world's finest reels made right here in the U.S.A.



TRIFOLD: LT-VM17

To see more **COXREELS** products go online to:

www.coxreels.com

or call **1.800.COX.REEL**

CORPORATE HEADQUARTERS:

Tempe, Arizona USA

Phone: 480.820.6396 Fax: 480.820.5132

www.coxreels.com info@coxreels.com



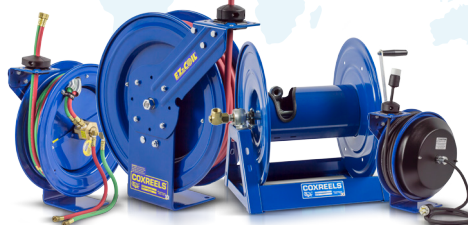
INTERNATIONAL:

EUROPE / MIDDLE EAST / AFRICA

Phone: +44 (0) 1536 464 990

Fax: +44 (0) 1536 464 999

www.crireels.com sales@crireels.com



YOUR REELS

MODEL # _____

MODEL # _____

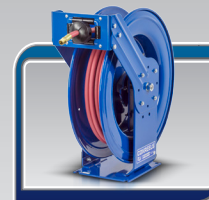
MODEL # _____

Authorized COXREELS® Reseller/Distributor

HOSE, CORD, & CABLE

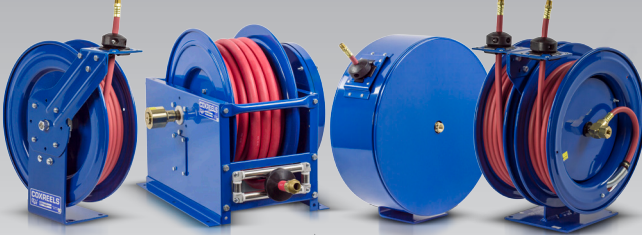
REELS

COXREELS SINCE 1923



SPRING DRIVEN REELS

Auto-Retractable, Heavy Duty, and Industrial Grade Reels



- ▶ Hose I.D. from 1/4" to 1-1/2"
- ▶ Pressures to 5,000 PSI
- ▶ Lengths to 125 feet
- ▶ Durable proprietary CPC™ powder coat
- ▶ Detachable roller guides
- ▶ Steel, aluminum, or stainless steel construction
- ▶ Full-flow swivel inlets
- ▶ Adjustable rubber hose stop
- ▶ Factory tuned and matched cartridge style spring motor
- ▶ Multi-position locking ratchet
- ▶ Side mount reels
- ▶ Adjustable guide arm

HAND CRANK & PORTABLE REELS

Large Capacity, Industrial Grade Reels for Long Hose Lengths



- ▶ Hose I.D. from 1/4" to 2"
- ▶ Pressures to 10,000 PSI
- ▶ Lengths to 700 feet
- ▶ Steel construction
- ▶ Durable proprietary CPC™ powder coat
- ▶ Optional roller guide assemblies
- ▶ Direct hand crank and bevel gear hand crank
- ▶ Low profile outlet riser and open drum slot design
- ▶ Hand carry and dolly reels
- ▶ Adjustable tension brake to prevent backlash

MOTOR DRIVEN HOSE REELS

Large Capacity, Industrial Grade Reels for Long Hose Lengths



- ▶ Hose I.D. from 3/8" to 2"
- ▶ Pressures to 10,000 PSI
- ▶ Lengths to 1,400 feet
- ▶ Steel construction
- ▶ Durable proprietary CPC™ powder coat
- ▶ Choice of electric, air, or hydraulic motors
- ▶ Low profile outlet riser and open drum slot design
- ▶ Direct gear drive or chain and sprocket
- ▶ Optional roller guide assemblies
- ▶ Optional motor switches and speed controllers

EZ-COIL® SAFETY SERIES REELS

Controlled, Self-Retracting Reels for Increased Safety



- ▶ Patented EZ-Coil® controlled retraction
- ▶ Up to 80% slower retraction
- ▶ Reduce workplace accidents
- ▶ Increased operator safety
- ▶ Pressures to 5,000 PSI
- ▶ Factory tuned and matched cartridge style spring motor
- ▶ Lengths to 100 feet
- ▶ Adjustable rubber hose stop
- ▶ Multi-position locking ratchet
- ▶ Durable proprietary CPC™ powder coat process
- ▶ Adjustable guide arm

	Conventional SPRING DRIVEN REELS	COXREELS EZ-COIL
80% Slower Retraction		
SPEED	25 ft./sec.	5 ft./sec.
WHIPPING	5-15 ft.	1 ft.
IMPACT	500 ft./lbs.	0-1ft./lbs.

Based on an independent evaluation performed by COXREELS. Depending on certain conditions, results may vary.

STAINLESS STEEL REELS

Heavy Duty, Professional Grade Reels for Superior Corrosion Resistance



- ▶ Hose I.D. from 3/8" to 1"
- ▶ Lengths to 400 feet
- ▶ Up to 4,000 PSI
- ▶ Stainless steel construction
- ▶ Available in spring driven, hand crank, and motorized versions
- ▶ Stainless steel fluid path with non-toxic grease
- ▶ Built off the strengths of each series
- ▶ Choice of finish (SP or SS)

SPECIALTY REELS

Heavy Duty, Professional Grade Specialty Reels for Unique Needs



- ▶ **Storage Reels**
Built with no swivel and riser for storage only
- ▶ **Pure Flow Series**
Stainless steel fluid paths with non-toxic grease for pure fluids
- ▶ **DEF Reels**
Built to handle diesel exhaust fluid
- ▶ **Vacuum Series**
Available in vacuum and vacuum/pneumatic combinations
- ▶ **Alumi-Pro®**
Professional grade strength without the weight
- ▶ **Nitro-Pro®**
Designed for nitrogen inflation systems

ELECTRIC CORD & CABLE REELS

Heavy Duty, Professional Grade Reels for Electrical Cord, Welding Cable, and Grounding Cable



- ▶ Available in 10, 12, and 16 gauge cord
- ▶ Lengths to 100 feet
- ▶ Steel construction
- ▶ Durable proprietary CPC™ powder coat
- ▶ Detachable roller guides
- ▶ Adjustable rubber cord stop
- ▶ Factory tuned and matched cartridge style spring motor
- ▶ Multi-position locking ratchet
- ▶ Adjustable guide arm
- ▶ Your choice of electrical accessories
- ▶ Spring driven models available in EZ-COIL

WELDING HOSE & CABLE REELS

Heavy Duty, Professional Grade Reels to Manage Your Welding Hose and Welding Cable



- ▶ Available in Oxy-Acetylene or "T" grade
- ▶ Welding hose with lengths up to 350 feet
- ▶ Available in welding cable for grounding or lead applications with lengths up to 600 feet
- ▶ Steel construction
- ▶ Available in spring driven, hand crank, and motorized versions
- ▶ Durable proprietary CPC™ powder coat
- ▶ Choice of accessories
- ▶ Spring driven models available in EZ-COIL

PROFESSIONAL UPGRADES & ACCESSORIES

Spring Driven, Hand Crank, and Motor Driven Accessories



- ▶ Mounting brackets
 - ▶ Roller brackets
 - ▶ Choice of swivels
 - ▶ Electric motor options
- ▶ For a complete list of upgrades and accessories, please view our main catalog or website

