

REPAIR PARTS

R36/3756 R1



3656/3756
S, M & L-Group

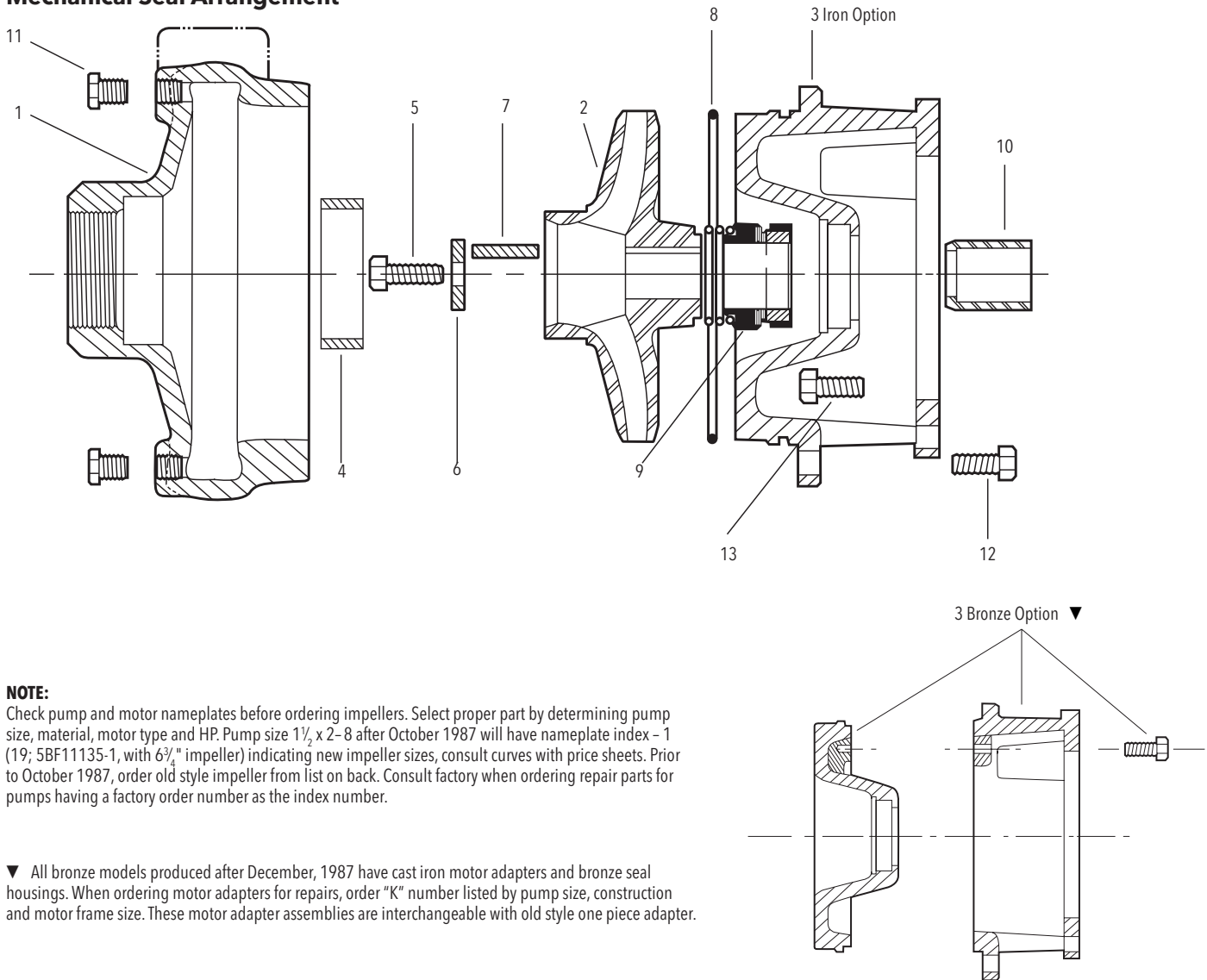
REPAIR PARTS



PUMP END PARTS FOR CLOSE-COUPLED OR FRAME MOUNTED CONFIGURATION 3656/3756 S-Group

Note: For S-Group power frame individual parts see S-Group Power Frame repair parts page, RSPFRAME.

Mechanical Seal Arrangement

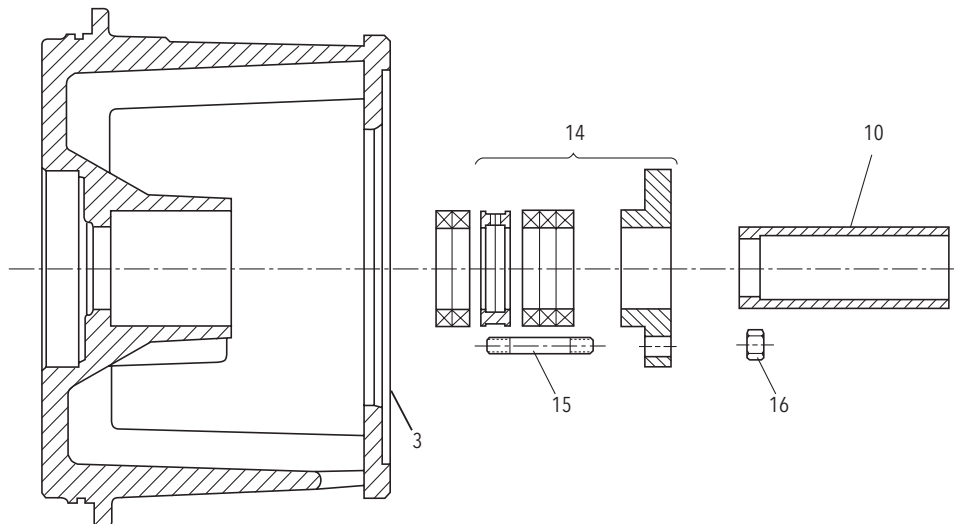


NOTE:

Check pump and motor nameplates before ordering impellers. Select proper part by determining pump size, material, motor type and HP. Pump size 1½ x 2-8 after October 1987 will have nameplate index - 1 (19; 5BF11135-1, with 6¾" impeller) indicating new impeller sizes, consult curves with price sheets. Prior to October 1987, order old style impeller from list on back. Consult factory when ordering repair parts for pumps having a factory order number as the index number.

▼ All bronze models produced after December, 1987 have cast iron motor adapters and bronze seal housings. When ordering motor adapters for repairs, order "K" number listed by pump size, construction and motor frame size. These motor adapter assemblies are interchangeable with old style one piece adapter.

Packed Box Arrangement 140JP - 180JP & 210 TCZ (west coast fit)



PUMP END PARTS FOR CLOSE-COUPLED WITH 140JM, 180JM, 210JM (MECHANICAL SEAL) 140JP, 180JP, 210TCZ (PACKED BOX) 3656/3756 S-Group

| Item No. | Part Description | Material | Repair Part No. | | | | | | | | |
|--|--|---------------------------|--|-----------|--------------|--------------|--------------|--------------|---------------|--------------|-------|
| | | | 22BF | 9BF | 3AI/BF/AB | 3AIH/BFH/ABH | 5AI/BF/AB | 4AI/BF/AB | 6AI/BF/AB | | |
| | | | 1 x 2-7 | 1 x 2-8 | 1½ x 2-6 | 1½ x 2-6H | 1½ x 2-8 | 2½ x 3-7 | 3 x 4-7 | | |
| 1 | Casing | Cast Iron | 1K365 | 1K612 | 1K98 | | 1K102 | 1K100 | 1K128 | | |
| | | Bronze | | | 1K99 | | 1K103 | 1K101 | 1K129 | | |
| 2 | Impeller | Cast iron | | | 2K124 (4.75) | 2K154 (5.62) | 2K344 (5.75) | 2K741 (4.12) | 2K1120 (7.06) | 2K233 (4.69) | |
| | | | | | 2K122 (5.12) | 2K152 (5.94) | 2K768 (6.12) | 2K740 (4.75) | 2K1111 (6.88) | 2K232 (5.12) | |
| | | | | | 2K120 (5.62) | | 2K343 (6.25) | 2K739 (4.94) | 2K1112 (6.56) | 2K230 (5.50) | |
| | | | | | 2K118 (5.94) | | 2K342 (6.75) | 2K738 (5.25) | 2K1113 (6.00) | 2K229 (6.38) | |
| | | | | | | | 2K341 (7.00) | 2K737 (5.44) | 2K1114 (5.69) | 2K324 (7.06) | |
| | | | | | | | 2K340 (7.62) | 2K736 (5.62) | 2K1115 (5.44) | | |
| | | | | | | | 2K339 (7.75) | 2K735 (5.88) | 2K1116 (5.19) | | |
| | | | | | | | 2K338 (8.06) | 2K734 (6.38) | 2K1117 (4.75) | | |
| | | | | | | | | 2K733 (6.75) | 2K1118 (4.50) | | |
| | | | | | | | | 2K732 (7.06) | 2K1119 (4.06) | | |
| | | | | | | | | | | | |
| | | | | | | | | | | | |
| | | | | | | | | | | | |
| | | | | | | | | | | | |
| | | | | | | | | | | | |
| | | | | | | | | | | | |
| | | | | | | | | | | | |
| | | | | | | | | | | | |
| | | 3 | Motor adapter – seal 140-180JM and frame mounted (210JM), (256TCZ) | Cast iron | 1K118 | 1K114 | 1K110 | 1K110 | 1K114 | 1K118 | 1K118 |
| | | | | Sil-Brass | | | 1K111 | 1K111 | 1K115 | 1K119 | 1K119 |
| Motor adapter – packing (140-180J) and frame mounted (210TCZ) | Cast iron | | 1K120 | 1K116 | 1K112 | 1K112 | 1K116 | 1K120 | 1K120 | | |
| | Sil-Brass | | | | 1K113 | 1K113 | 1K117 | 1K121 | 1K121 | | |
| | Cast iron | | 1K369 | 1K371 | 1K367 | 1K367 | 1K371 | 1K369 | 1K369 | | |
| | Cast iron | | 1K370 | 1K372 | | | 1K372 | 1K370 | 1K370 | | |
| 4 | Casing wear ring | Cast iron | 4K67 | | | | | 4K69† | 4K263 | | |
| | | Bronze | 4K68 | | | | | 4K70† | 4K264 | | |
| 5 | Impeller bolt | | 13K43 | | | | | | | | |
| 6 | Impeller washer | AISI 303SS | 13L39 | | | | | | | | |
| 7 | Impeller key | | 4K11 | | | | | | | | |
| 8 | Casing o-ring | BUNA | 5K4 | 5K74 | 5K73 | | 5K74 | 5K4 | | | |
| | | EPR | 5K193 | 5K192 | 5K194 | | 5K192 | 5K193 | | | |
| | | Viton | 5K206 | 5K205 | 5K207 | | 5K205 | 5K206 | | | |
| 9 | Seal assembly | Carbon/ceramic BUNA | 10K13 | | | | | | | | |
| | | Carbon/sil-carb. EPR | 10K19 | | | | | | | | |
| | | Carbon/sil-carb. viton | 10K27 | | | | | | | | |
| | | Sil-carb./sil-carb./viton | 10K64 | | | | | | | | |
| 10 | Shaft sleeve – mechanical seal | 300SS | 4K66 | | | | | | | | |
| | Shaft sleeve – packed box | 300SS | 4K473 | | | | | | | | |
| 11 | ¼" pipe plug (casing) | Zinc Plated Steel | 6K2 (Quantity 4) | | | | | | | | |
| | | Bronze | 6K42 (Quantity 4) | | | | | | | | |
| 12 | Hex head screw (casing) | Zinc | 13K69 (Quantity 8) | | | | | | | | |
| 13 | Hex head screw (motor adapter) (140 – 180) (210) | Plated Steel | 13K69 (Quantity 4) | | | | | | | | |
| | | | 13K102 | | | | | | | | |
| 14 | Packed box kit includes – gland | 316SS | 15K16 | | | | | | | | |
| | Packing and lantern | Teflon | 15K16 | | | | | | | | |
| 15 | Gland stud (quantity 2) | 300SS | 13K295 | | | | | | | | |
| 16 | Gland nut (quantity 2) | 300SS | 13K262 | | | | | | | | |

NOTES: Casing includes plugs. Impeller bolt and shaft sleeve must be removed. When replacing, bond and seal shaft sleeve and impeller bolt to shaft with Loctite AL27121.

*2½ x 3-7 pumps built after April 1, 2006 are supplied with new style impeller. Old style impeller numbers are listed for reference only. Use NEW numbers for repairs.

†2½ x 3-7 use two casing wear rings, same front and back.

‡1750 RPM only.

PUMP END PARTS FOR CLOSE-COUPLED OR FRAME MOUNTED CONFIGURATION 3656/3756 M & L-Group

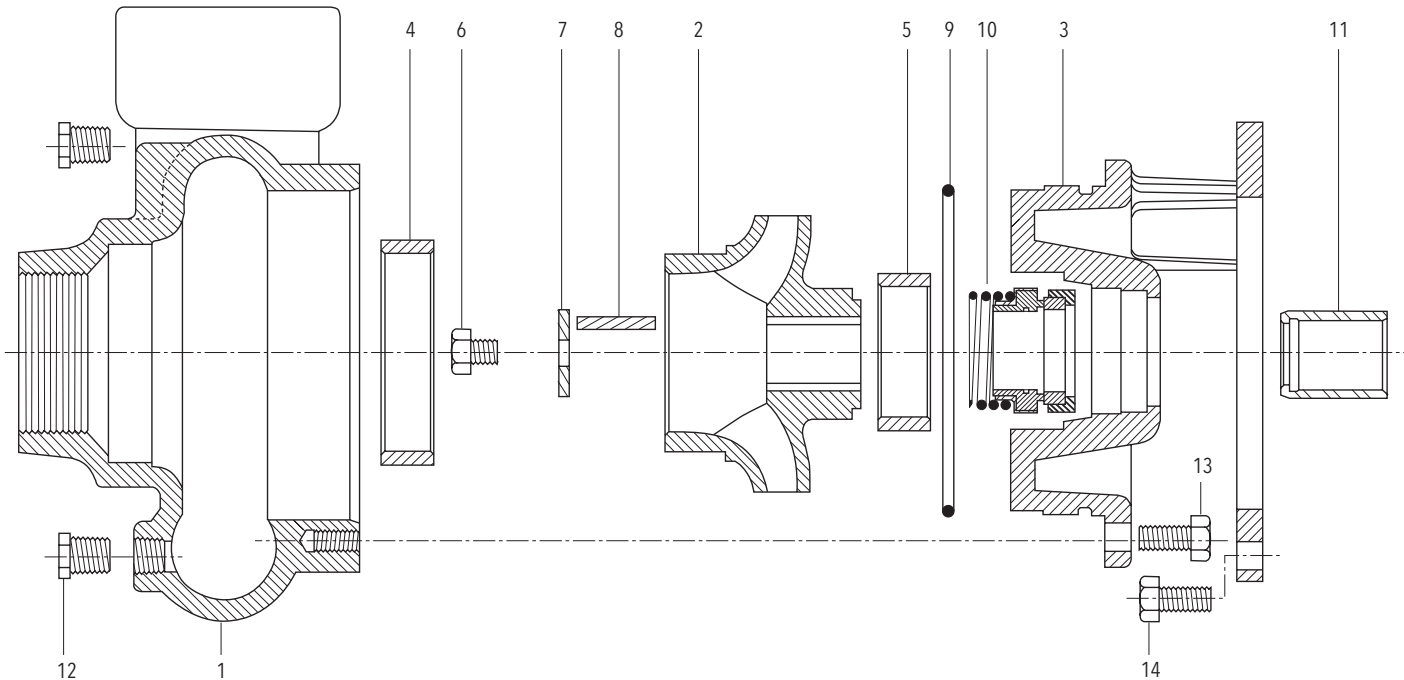
Note: For M & L-Group power frame individual parts see M & L-Group Power Frame repair parts pages:

RMPFRAME - M-Group

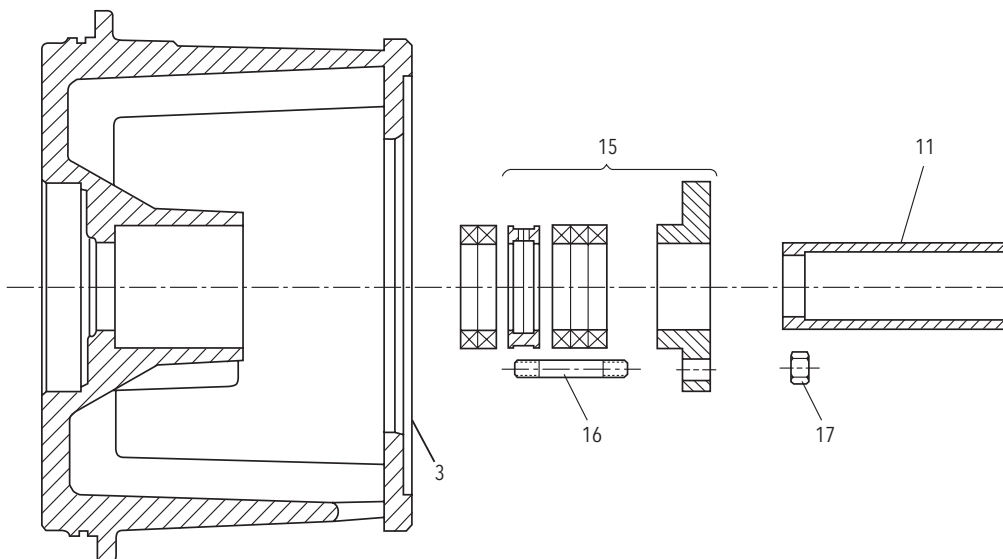
RLPFRAME - L-Group

RSAFRAME - M and L SAE Frames

Mechanical Seal Arrangement



Packed Box Arrangement 250JP - 360 TCZ, Frame Mount and SAE Drive 250JP - 445TCZ, Close-Coupled



PUMP END PARTS FOR CLOSE-COUPLED WITH 140JM, 180JM, 210JM (MECHANICAL SEAL), 140JP, 180JP, 210TCZ (PACKED BOX)

(All pumps in this section have a 7/8" Diameter Impeller Hub Bore)

3656/3756 M-Group

| Item No. | Part Description | Material | Repair Part No. | | | | | | | |
|----------|------------------------------|-------------|--|---------------|---------------|----------------|----------------|---------------|---------------|----------------|
| | | | 7 AI/BF | 16 AI/BF | 10 AI/BF | 8 AI/BF | 11 AI/BF | 12 AI/BF | 21BF | |
| | | | 2 1/2 x 3 - 8 | 3 x 4 - 8 | 4 x 5 - 8 | 1 1/2 x 2 - 10 | 2 1/2 x 3 - 10 | 3 x 4 - 10 | 2 1/2 x 3 - 9 | |
| 1 | Casing | Cast Iron | 1K130 | 1K316 | 1K238 | 1K132 | 1K236 | 1K237 | 1K236 | |
| 2 | Impeller | Cast Iron | 8 1/16 2K573 | 8 1/16 2K673 | 8 1/16 2K589 | 10 1/16 2K609 | 10 1/16 2K665 | 10 1/16 2K633 | | |
| | | | 7 15/16 2K575 | 7 7/16 2K675 | 7 7/8 2K591 | 9 9/16 2K611 | 9 7/8 2K667 | 9 3/4 2K635 | | |
| | | | 7 7/16 2K577 | 6 3/4 2K677 | 7 3/4 2K593 | 8 3/8 2K613 | 9 5/8 2K669 | 9 2K637 | | |
| | | | 7 3/16 2K579 | 6 3/8 2K679 | 7 1/2 2K595 | 7 3/4 2K615 | 9 2K671 | 8 5/8 2K639 | | |
| | | | 6 13/16 2K581 | 5 15/16 2K681 | 7 1/4 2K597 | 7 5/16 2K617 | 8 5/8 2K623 | 8 5/8 2K641 | | |
| | | | 6 1/2 2K583 | 5 1/2 2K683 | 7 2K599 | 7 1/4 2K619 | 8 1/4 2K625 | 7 5/8 2K643 | | |
| | | | 6 3/8 2K585 | 5 5/8 2K685 | 6 3/4 2K601 | 7 2K621 | 8 2K627 | | | |
| | | | 6 3/16 2K587 | 4 5/8 2K687 | 6 1/2 2K603 | | 7 5/8 2K629 | | | |
| | | | | 6 1/16 2K605 | | 7 7/32 2K631 | | | | |
| | | | | 5 3/4 2K607 | | | | | | |
| | | | | 8 1/16 2K574 | 8 1/16 2K674 | 8 1/16 2K590 | 10 1/16 2K610 | 10 1/16 2K666 | 10 1/16 2K634 | 10 1/16 2K1010 |
| | | | | 7 15/16 2K576 | 7 7/16 2K676 | 7 7/8 2K592 | 9 9/16 2K612 | 9 7/8 2K668 | 9 3/4 2K636 | 9 7/8 2K1011 |
| | | | | 7 7/16 2K578 | 6 3/4 2K678 | 7 3/4 2K594 | 8 3/8 2K614 | 9 5/8 2K670 | 9 2K638 | 9 1/2 2K1012 |
| | | | | 7 3/16 2K580 | 6 3/8 2K680 | 7 1/2 2K596 | 7 3/4 2K616 | 9 2K672 | 8 5/8 2K640 | 9 1/4 2K1013 |
| | | | | 6 13/16 2K582 | 5 15/16 2K682 | 7 1/4 2K598 | 7 5/16 2K618 | 8 5/8 2K624 | 8 5/8 2K642 | 8 15/16 2K1014 |
| | | | | 6 1/2 2K584 | 5 1/2 2K684 | 7 2K600 | 7 1/4 2K620 | 8 1/4 2K626 | 7 5/8 2K644 | 8 1/2 2K1015 |
| | | | | 6 3/8 2K586 | 5 5/8 2K686 | 6 3/4 2K602 | 7 2K622 | 8 2K628 | | 8 7/16 2K1016 |
| | | | | 6 3/16 2K588 | 4 5/8 2K688 | 6 1/2 2K604 | | 7 5/8 2K630 | | 8 2K1017 |
| | | | | | | 6 1/16 2K606 | | 7 5/8 2K632 | | 7 11/16 2K1018 |
| | | | | | | 5 3/4 2K608 | | | | |
| 3 | Motor adapter 140-180JM | Cast Iron | 1K114 | | | | 1K319 | | | |
| | -Seal 210JM | | 1K116 | | | | 1K320 | | | |
| | Motor adapter 140-180JP | | 1K371 | | | | 1K381 | | | |
| | -Packing 210TCZ | | 1K372 | | | | - | | | |
| | | | | | | | | | | |
| 4 | Front wear ring | Cast Iron | 4K265 | 4K350 | 4K352 | 4K267 | 4K265 | 4K350 | | |
| | | Bronze | 4K266 | 4K351 | 4K353 | 4K268 | 4K266 | 4K351 | 4K266 | |
| 5 | Back wear ring | Cast Iron | - | - | - | - | - | - | | |
| | | Bronze | - | - | - | - | - | - | | |
| 6 | Impeller bolt | | | | 13K43 | | | | | |
| 7 | Impeller washer | AISI 303 SS | | | 13L39 | | | | | |
| 8 | Square key | | | | 4K11 | | | | | |
| 9 | O-ring | BUNA | 5K74 | | | 5K155 | | | | |
| | | Viton | 5K205 | | | 5K208 | | | | |
| | | EPR | 5K192 | | | 5K318 | | | | |
| 10 | Seal assembly Carbon/ceramic | BUNA | 10K13 | | | | | | | |
| | Carbon/Sil-carb. | EPR | 10K19 | | | | | | | |
| | Carbon/Sil-carb. | Viton | 10K27 | | | | | | | |
| | Sil-carb./Sil-carb. | Viton | 10K64 | | | | | | | |
| 11 | Shaft sleeve | 300 SS | 4K66 | | | | | | | |
| | Seal packing | | 4K473 | | | | | | | |
| 12 | 3/8" NPT plug | Zinc | 6K2 | | 6K3 | | | | | |
| 13 | Casing HD screw (Quantity 8) | Plated | 13K69 | | | | | | | |
| 14 | Motor screw (Quantity 4) | Steel | 13K69 (140 & 180 JM/JP) and 13K102 (250 JM/JP & Frame) | | | | | | | |
| 15 | Packed box kit includes: | | | | | | | | | |
| | Gland Packing & lantern ring | 316 SS | 15K16 | | | | | | | |
| 16 | Stud, gland (Quantity 2) | 300 SS | 13K295 | | | | | | | |
| 17 | Hex nut, gland (Quantity 2) | 300 SS | 13K262 | | | | | | | |
| | Loctite #271 | | AL27121 | | | | | | | |

PUMP END PARTS FOR CLOSE-COUPLED WITH 250JM-360TCZ (MECHANICAL SEAL), 210JP-445TCZ (PACKED BOX) AND ALL FRAME MOUNTED CONFIGURATION 3656/3756 M-Group

Note: For M & L-Group power frame individual parts, see M & L-Group Power Frame repair parts page.

| Item No. | Part Description | Material | Repair Part No. | | | | | | | | | |
|----------|---|-------------|---------------------------------------|---------------------------------------|---------------------------------------|---------------------------------------|--|---------------------------------------|--|---------------------------------------|--|--|
| | | | 7 AI/BF | 16 AI/BF | 10 AI/BF | 8 AI/BF | 11 AI/BF | 12 AI/BF | 17BF | 21BF | | |
| | | | 2½ x 3-8 | 3 x 4-8 | 4 x 5-8 | 1½ x 2-10 | 2½ x 3-10 | 3 x 4-10 | 4 x 6-10 | 2½ x 3-9 | | |
| 1 | Casing | Cast Iron | 1K130 | 1K316 | 1K238 | 1K132 | 1K236 | 1K237 | 1K351 | 1K236 | | |
| 2 | Impeller | Cast Iron | 7 ¹ / ₁₆ 2K168 | 8 ¹ / ₁₆ 2K689 | 8 ¹ / ₁₆ 2K645 | 9 ¹ / ₁₆ 2K176 | 10 ¹ / ₁₆ 2K370 | 10 ¹ / ₁₆ 2K395 | | | | |
| | | | 7 ³ / ₁₆ 2K170 | 7 ⁷ / ₁₆ 2K691 | 7 ⁷ / ₁₆ 2K647 | 8 ³ / ₁₆ 2K178 | 9 ¹ / ₁₆ 2K371 | 9 ³ / ₁₆ 2K396 | | | | |
| | | | 6 ¹³ / ₁₆ 2K172 | 6 ³ / ₄ 2K693 | 7 ³ / ₄ 2K649 | 7 ³ / ₄ 2K180 | 9 ⁵ / ₁₆ 2K372 | 9 2K397 | | | | |
| | | | 6 ³ / ₁₆ 2K174 | 6 ³ / ₁₆ 2K695 | 7 ¹ / ₂ 2K651 | 7 2K182 | 9 2K373 | 8 ⁵ / ₁₆ 2K398 | | | | |
| | | | 6 ³ / ₁₆ 2K480 | 5 ¹⁵ / ₁₆ 2K697 | 7 ¹ / ₄ 2K653 | 10 ¹ / ₁₆ 2K490 | 8 ⁵ / ₁₆ 2K374 | 8 ⁵ / ₁₆ 2K399 | | | | |
| | | | 7 ¹ / ₁₆ 2K482 | 5 ¹ / ₂ 2K699 | 7 2K655 | 7 ⁵ / ₁₆ 2K492 | 8 ¹ / ₄ 2K375 | 7 ⁵ / ₁₆ 2K400 | | | | |
| | | | | 5 ¹ / ₈ 2K701 | 6 ³ / ₄ 2K657 | 7 ¹ / ₄ 2K468 | 8 2K376 | | | | | |
| | | | | 4 ⁷ / ₁₆ 2K703 | 6 ¹ / ₂ 2K659 | | 7 ⁵ / ₁₆ 2K377 | | | | | |
| | | | | | 6 ¹ / ₁₆ 2K661 | | 7 ¹ / ₈ 2K378 | | | | | |
| | | | | | 5 ³ / ₄ 2K663 | | | | | | | |
| | | | | 7 ¹⁵ / ₁₆ 2K169 | 8 ¹ / ₁₆ 2K690 | 8 ¹ / ₁₆ 2K646 | 9 ³ / ₁₆ 2K177 | 10 ¹ / ₁₆ 2K379 | 10 ¹ / ₁₆ 2K401 | 10 ¹ / ₁₆ 2K816 | 10 ¹ / ₁₆ 2K1001 | |
| | | | | 7 ³ / ₁₆ 2K171 | 7 ⁷ / ₁₆ 2K692 | 7 ⁷ / ₁₆ 2K648 | 8 ³ / ₁₆ 2K179 | 9 ¹ / ₁₆ 2K380 | 9 ³ / ₁₆ 2K402 | 9 ⁹ / ₁₆ 2K818 | 9 ⁷ / ₈ 2K1002 | |
| | | | | 6 ¹³ / ₁₆ 2K173 | 6 ³ / ₄ 2K694 | 7 ³ / ₄ 2K650 | 7 ³ / ₄ 2K181 | 9 ⁵ / ₁₆ 2K381 | 9 2K403 | 9 ¹ / ₈ 2K820 | 9 ¹ / ₂ 2K1003 | |
| | | | | 6 ³ / ₁₆ 2K175 | 6 ³ / ₁₆ 2K696 | 7 ¹ / ₂ 2K652 | 7 2K183 | 9 2K382 | 8 ³ / ₁₆ 2K404 | 8 ¹¹ / ₁₆ 2K822 | 9 ¹ / ₄ 2K1004 | |
| | | | | 6 ³ / ₁₆ 2K481 | 5 ¹⁵ / ₁₆ 2K698 | 7 ¹ / ₄ 2K654 | 10 ¹ / ₁₆ 2K491 | 8 ⁵ / ₁₆ 2K383 | 8 ⁵ / ₁₆ 2K405 | 8 ¹ / ₈ 2K824 | 8 ¹⁵ / ₁₆ 2K1005 | |
| | | | | 7 ¹ / ₁₆ 2K483 | 5 ¹ / ₂ 2K700 | 7 2K656 | 7 ⁵ / ₁₆ 2K493 | 8 ¹ / ₄ 2K384 | 7 ⁵ / ₈ 2K406 | 7 ³ / ₄ 2K826 | 8 ¹ / ₂ 2K1006 | |
| | | | | | 5 ¹ / ₈ 2K702 | 6 ³ / ₄ 2K658 | 7 ¹ / ₄ 2K469 | 8 2K385 | 9 ¹ / ₁₆ * 2K831 | | 8 ³ / ₁₆ 2K1007 | |
| | | | | | 4 ⁷ / ₁₆ 2K704 | 6 ¹ / ₂ 2K660 | | 7 ⁵ / ₁₆ 2K386 | 8 ³ / ₁₆ * 2K832 | | 8 2K1008 | |
| | | | | | | 6 ¹ / ₁₆ 2K662 | | 7 ¹ / ₈ 2K387 | 8 ¹ / ₁₆ * 2K833 | | 7 ¹¹ / ₁₆ 2K1009 | |
| | | | | | | 5 ³ / ₄ 2K664 | | | 8 ¹ / ₁₆ * 2K834 | | | |
| | | | | | | | 7 ³ / ₄ * 2K835 | | | | | |
| | | | | | | | 7 ⁵ / ₈ * 2K836 | | | | | |
| | | | | | | | 7 ¹ / ₄ * 2K837 | | | | | |
| | | | | | | | 7 ¹ / ₁₆ * 2K838 | | | | | |
| | | | | | | | 6 ³ / ₄ * 2K839 | | | | | |
| 3 | Motor adapter - seal 210TCZ-250JM & frame mounted 280JM-360TCZ | Cast Iron | 1K136 | 1K317 | 1K317 | 1K138 | | | | | | |
| | 1K242 | | 1K318 | 1K318 | 1K243 | | | | | | | |
| | 1K357 | | 1K358 | 1K358 | 1K355 | | | | | | | |
| | 1K359 | | 1K360 | 1K360 | | 1K356 | | - | 1K356 | | | |
| 4 | Front wear ring | Cast Iron | 4K265 | 4K350 | 4K352 | 4K267 | 4K265 | 4K350 | - | | | |
| | | Bronze | 4K266 | 4K351 | 4K353 | 4K268 | 4K266 | 4K351 | 4K363 | 4K265 | | |
| 5 | Back wear ring | Cast Iron | 4K265 | 4K350 | 4K350 | 4K265 | 4K265 | - | - | | | |
| | | Bronze | 4K266 | 4K351 | 4K351 | 4K266 | 4K266 | 4K266* | 4K351 | 4K265 | | |
| 6 | Impeller bolt | | 13K155 (SAE Drive use 13K341) | | | | | | | | | |
| 7 | Impeller washer | AISI 303 SS | 13K241 | | | | | | | | | |
| 8 | Square key | | 4K261 | | | | | | | | | |
| 9 | O-ring | BUNA | 5K74 | | | 5K155 | | | | | | |
| | | Viton | 5K205 | | | 5K208 | | | | | | |
| | | EPR | 5K192 | | | 5K318 | | | | | | |
| 10 | Seal assembly Carbon/ceramic | BUNA | 10K16 | | | | | | | | | |
| | Carbon/Sil-carb. | EPR | 10K20 | | | | | | | | | |
| | Carbon/Sil-carb. | Viton | 10K45 | | | | | | | | | |
| | Sil-carb./Sil-carb. | Viton | 10K65 | | | | | | | | | |
| 11 | Shaft sleeve, mech. seal | SS | 4K262 | | | | | | | | | |
| | Shaft sleeve, packed box | SS | 4K455 | | | | | | | | | |
| 12 | ¾" NPT plug (Quantity 2) | Zinc Plated | 6K2 | | | 6K3 | | | | | | |
| 13 | Casing HD screw (Quantity 8) | Steel | 13K69 | | | | | | | | | |
| 14 | Motor screw (Quantity 4) | Steel | 13K102 (250 JM/JP & frame mounted) | | | | | 13K247 (280 JM/JP & larger) | | | | |
| 15 | Packed box kit includes: Gland | 316SS | 15K3 | | | | | | | | | |
| | Packing & lantern ring | Teflon | | | | | | | | | | |
| 16 | Stud, gland (Quantity 2) | 300 SS | 13K291 | | | | | | | | | |
| 17 | Hex nut, gland (Quantity 2) | 300 SS | 13K292 | | | | | | | | | |
| | Loctite #271 | | AL27121 | | | | | | | | | |

* 3500 RPM units

PUMP END PARTS FOR CLOSE-COUPLED WITH 250JM-360TCZ (MECHANICAL SEAL), 210JP-445TCZ (PACKED BOX) AND ALL FRAME MOUNTED CONFIGURATION 3656/3756 M-Group

Note: For M & L-Group power frame individual parts, see M & L-Group Power Frame repair parts page.

| Item No. | Part Description | Material | Repair Part No. | | | | | | |
|----------|--|-------------|---|----------|----------|---------|---------|---------|-------|
| | | | 13 AI/BF | 14 AI/BF | 15 AI/BF | | | | |
| | | | 2 1/2 x 3-13 | 3 x 4-13 | 4 x 6-13 | | | | |
| | | | M-Group | M-Group | M-Group | | | | |
| 1 | Casing | Cast Iron | 1K239 | 1K240 | 1K479 | | | | |
| 2 | Impeller | Cast Iron | 13 1/16 | 2K407 | 13 1/16 | 2K419 | 13 1/16 | 2K979 | |
| | | | 12 3/4 | 2K408 | 12 1/16 | 2K420 | 12 7/8 | 2K443 | |
| | | | 11 1/8 | 2K409 | 12 1/16 | 2K421 | 12 1/2 | 2K444 | |
| | | | 11 3/8 | 2K410 | 12 | 2K422 | 12 1/4 | 2K445 | |
| | | | 9 7/8 | 2K411 | 11 3/4 | 2K423 | 11 7/8 | 2K446 | |
| | | | 9 3/8 | 2K412 | 11 1/16 | 2K424 | 11 3/8 | 2K447 | |
| | | | | | 10 3/4 | 2K425 | 11 1/16 | 2K448 | |
| | | | | | 10 1/8 | 2K426 | 10 7/8 | 2K449 | |
| | | | | | 9 1/8 | 2K427 | 10 1/2 | 2K450 | |
| | | | | | 8 1 1/16 | 2K428 | 10 1/4 | 2K451 | |
| | | | | 8 | 2K429 | 9 7/8 | 2K452 | | |
| | | | | 7 7/16 | 2K430 | 9 3/8 | 2K453 | | |
| | | | | 13 1/16 | 2K413 | 13 1/16 | 2K431 | 13 1/16 | 2K980 |
| | | | | 12 3/4 | 2K414 | 12 1/16 | 2K432 | 12 7/8 | 2K454 |
| | | | | 11 1/8 | 2K415 | 12 1/16 | 2K433 | 12 1/2 | 2K455 |
| | | | | 11 3/8 | 2K416 | 12 | 2K434 | 12 1/4 | 2K456 |
| | | | | 9 7/8 | 2K417 | 11 3/4 | 2K435 | 11 7/8 | 2K457 |
| | | | | 9 3/8 | 2K418 | 11 1/16 | 2K436 | 11 3/8 | 2K458 |
| | | | | | | 10 3/4 | 2K437 | 11 1/16 | 2K459 |
| | | | | | | 10 1/8 | 2K438 | 10 7/8 | 2K460 |
| | | | | 9 1/8 | 2K439 | 10 1/2 | 2K461 | | |
| | | | | 8 1 1/16 | 2K440 | 10 1/4 | 2K462 | | |
| | | | | 8 | 2K441 | 9 7/8 | 2K463 | | |
| | | | | 7 1/16 | 2K442 | 9 3/8 | 2K464 | | |
| 3 | Motor adapter - seal 210TCZ-250JM and frame mounted 280JM-360TCZ | Cast Iron | 1K244 | | | | | | |
| | | | 1K245 | | | | | | |
| | Motor adapter - packing 210JP-250JP and frame mounted 280JP-360TCZ | | 1K361 | | | | | | |
| | | | 1K362 | | | | | | |
| 4 | Front wear ring | Cast Iron | 4K265 | 4K350 | 4K362 | | | | |
| | | Bronze | 4K266 | 4K351 | 4K363 | | | | |
| 5 | Back wear ring | Cast Iron | 4K350 | 4K350 | 4K350 | | | | |
| | | Bronze | 4K351 | 4K351 | 4K351 | | | | |
| 6 | Impeller bolt | | 13K155 | | | | | | |
| 7 | Impeller washer | AISI 303 SS | 13K241 | | | | | | |
| 8 | Square key | | 4K261 | | | | | | |
| 9 | O-ring | BUNA | 5K199 | | | | | | |
| | | Viton | 5K209 | | | | | | |
| 10 | Seal assembly Carbon/ceramic | BUNA | 10K16 | | | | | | |
| | Carbon/Sil-carb. | EPR | 10K20 | | | | | | |
| | Carbon/sil-carb. | Viton | 10K45 | | | | | | |
| | Sil-carb./sil-carb. | Viton | 10K65 | | | | | | |
| 11 | Shaft sleeve, mech. seal | SS | 4K262 | | | | | | |
| | Shaft sleeve, packed box | SS | 4K455 | | | | | | |
| 12 | 3/8" NPT plug (Quantity 2) | Zinc Plated | 6K3 | | | | | | |
| 13 | Casing HD screw (Quantity 8) | | 13K102 | | | | | | |
| 14 | Motor screw (Quantity 4) | Steel | 13K102 (250JM/250JP and frame mounted) 13K247 (280JM/JP and larger) | | | | | | |
| 15 | Packed box kit includes: Gland | 316SS | 15K3 | | | | | | |
| | Packing & lantern ring | Teflon | | | | | | | |
| 16 | Stud, gland (Quantity 2) | 300SS | 13K291 | | | | | | |
| 17 | Hex nut, gland (Quantity 2) | 300SS | 13K292 | | | | | | |
| | Loctite #271 | | AL27121 | | | | | | |

PUMP END PARTS FOR CLOSE-COUPLED WITH 250JM-360TCZ (MECHANICAL SEAL), 210JP-445TCZ (PACKED BOX) AND ALL FRAME MOUNTED CONFIGURATION 3656/3756 L-Group

Note: For M & L-Group power frame individual parts, see M & L-Group Power Frame repair parts page.

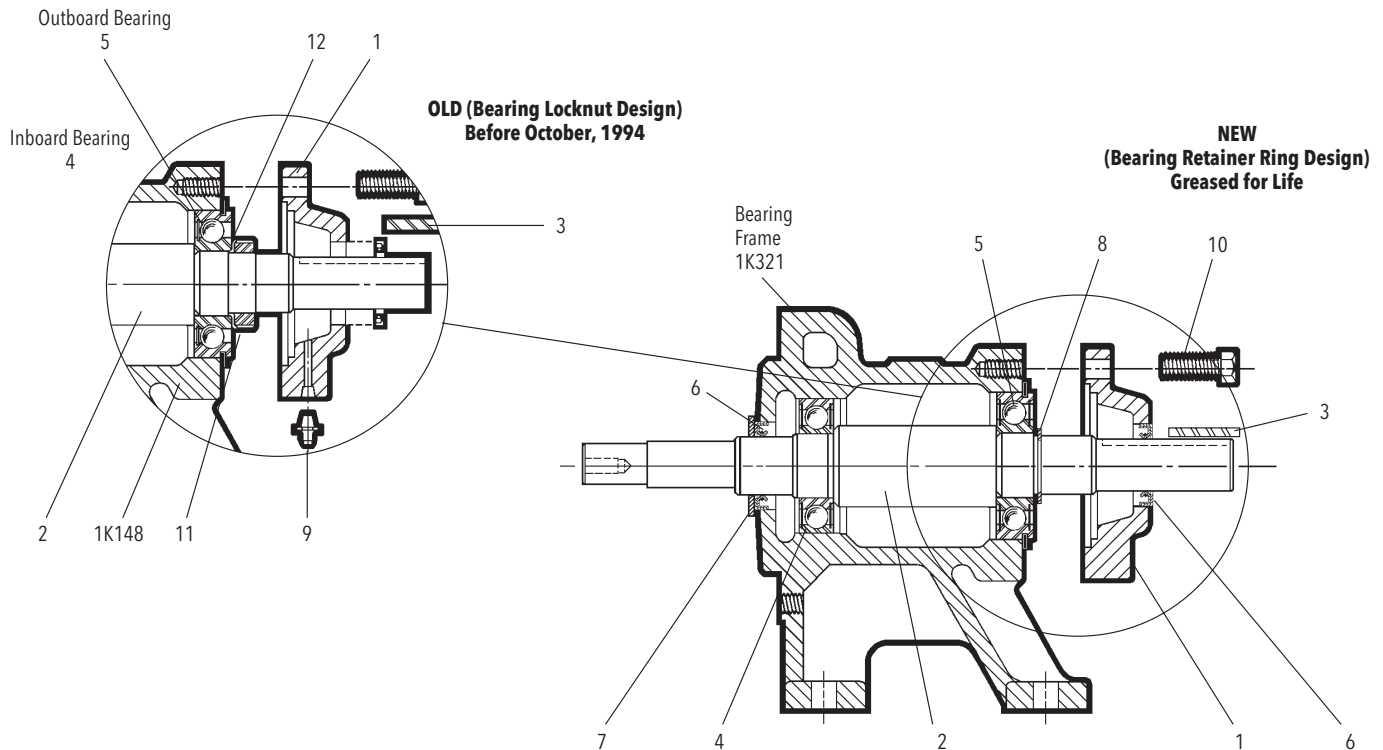
| Item No. | Part Description | Material | Repair Part No. | | | |
|----------|--|-------------------|-------------------------------|-----------|-----------|-----------|
| | | | 18BF | 18BF | 19 BF | 20BF |
| | | | 6 x 8-13 | 6 x 8-13 | 8 x 10-13 | 4 x 6-16 |
| | | | M-Group | | L-Group | |
| 1 | Casing | Cast Iron | 1K352 | 1K352 | 1K353 | 1K354 |
| 2 | Impeller | Sil-Brass | 1180 RPM | | | |
| | | | 9½ 2K851 | | 9¾ 2K897 | |
| | | | 10 2K850 | | 10⅞ 2K896 | |
| | | | 10½ 2K849 | | 11¼ 2K895 | |
| | | | 10⅞ 2K848 | | 11⅝ 2K894 | |
| | | | 11⅞ 2K847 | | 11⅞ 2K893 | |
| | | | 11⅞ 2K846 | | 12⅝ 2K892 | |
| | | | 11⅞ 2K889 | | 12¾ 2K891 | |
| | | | 12⅝ 2K888 | | 13 2K890 | |
| | | | 12½ 2K887 | | | |
| | | | 13 2K886 | | | |
| | | | 1750 RPM | | | |
| | | | 11⅞ 2K846 | 13 2K842 | 13 2K860 | 16 2K873 |
| | | | 11⅞ 2K847 | 12½ 2K843 | 12¾ 2K861 | 15⅞ 2K874 |
| | | | 10⅞ 2K848 | 12⅝ 2K844 | 12⅞ 2K862 | 15⅞ 2K875 |
| | | | 10½ 2K849 | 11⅞ 2K845 | 11⅞ 2K863 | 14½ 2K876 |
| | | | 10 2K850 | 11⅞ 2K880 | 11⅞ 2K864 | 13¾ 2K877 |
| | | | 9½ 2K851 | 11⅞ 2K881 | 11¼ 2K865 | |
| | | | | 10⅞ 2K882 | 10⅞ 2K866 | |
| | | | | 10½ 2K883 | 9¾ 2K867 | |
| | 10 2K884 | | | | | |
| | 9½ 2K885 | | | | | |
| 3 | Motor adapter - Mech. seal Frame Mounted 210JP-250JP 280-360TCZ 360JP-400TCZ 440TCZ | Cast Iron | - | 1K377 | 1K379 | |
| | | | 1K377 | 1K377 | 1K380 | |
| | | | 1K378 | 1K378 | - | |
| | - | | 1K480 & 1K412 | - | | |
| | - | | 1K373 | 1K375 | | |
| | Motor adapter - Packed box Frame Mounted 210JP-250JP 280-360TCZ 360JP-400TCZ 440TCZ | | 1K373 | 1K373 | 1K376 | |
| | - | | 1K374 | - | | |
| 4 | Front wear ring | Bronze | 4K475 | 4K476 | 4K477 | |
| 5 | Back wear ring | Bronze | 4K474 | | | |
| 6 | Impeller bolt | AISI 303 SS | 13K155 (SAE Drive use 13K341) | | | |
| 7 | Impeller washer | | 13K290 | | | |
| 8 | Square key | | 4K460 | | | |
| 9 | O-ring | BUNA | 5K199 | | 5K298 | |
| | | Viton | 5K209 | | 5K299 | |
| 10 | Seal assembly (Stat / Rot) Ceramic/carbon | BUNA | 10K84 | | | |
| | Sil-carb./Carbon | Viton | 10K112 | | | |
| | Sil-carb./sil-carb. | Viton | 10K144 | | | |
| 11 | Shaft sleeve, mech. seal Frame Mounted 210-320 | 300 SS | - | 4K457 | | |
| | 360-440TCZ | | 4K457 | | | |
| | | | 4K459 | | | |
| | Shaft sleeve, packed box Frame Mounted 210-320 | | - | 4K456 | | |
| | 360-440TCZ | | 4K456 | | | |
| | 4K458 | | | | | |
| 12 | Plug, casing (Quantity 2) | Zinc Plated Steel | 6K3 | | | |
| 13 | Bolt, casing (Quantity 8) | | 13K69 | | | |
| 14 | Bolt, motor (Quantity 4) Frame Mounted 210-250 | | 13K102 (Quantity 4) | | | |
| | 280-405TCZ | | 13K247 (Quantity 4) | | | |
| | 445TCZ | | 13K247 (Quantity 8) | | | |
| 15 | Packed box kit includes: Gland | 316SS | 15K4 | | | |
| | Packing & lantern ring | Teflon | | | | |
| 16 | Stud, gland (Quantity 2) | 300SS | 13K291 | | | |
| 17 | Hex nut, gland (Quantity 2) | 300SS | 13K292 | | | |

Commercial Water Systems

S-GROUP POWER FRAMES AND PARTS

3756/3757/SSH S-Group

- 14L52 - Complete assembly for mechanical seal pumps.
- 15K17 - Complete assembly for packed box pumps.



Complete Bearing Frame Assemblies:

Order 14L52 for mechanical seal models.

Order 15K17 for packed box models.

| ITEM NO. | OLD Regreasable | NEW Grease for life | DESCRIPTION | MATERIAL | PATTERN NO. |
|----------|--------------------|------------------------|---|----------------|-------------|
| 1 | 1K437 | 1K322 | Bearing cover | Cast iron | 59027 |
| 2 | 4K277 - | 4K410 4K478 | Shaft - mechanical seal Shaft - packed box | Steel Steel | |
| 3 | 4K278 | 4K278 | Key - motor end | Steel | |
| 4 | 4K279 | 4K412 | Inboard bearing | Steel | |
| 5 | 4K280 | 4K413 | Outboard bearing | Steel | |
| 6 | 5K159 | 5K159 | Lip seal | BUNA/steel | |
| 7 | 5K160 | 5K160 | Deflector | BUNA-N | |
| 8 | NA | 5K245 | Retaining ring | Steel | |
| 9 | 6K80 | NA | Grease fitting - frame and bearing cover | Steel | |
| 10 | 13K80 | 13K80 | Hex head cap screw - bearing cover | Steel | |
| 11 | 13K166 | NA | Locknut | Steel | |
| 12 | 13K167 | NA | Lockwasher | Steel | |

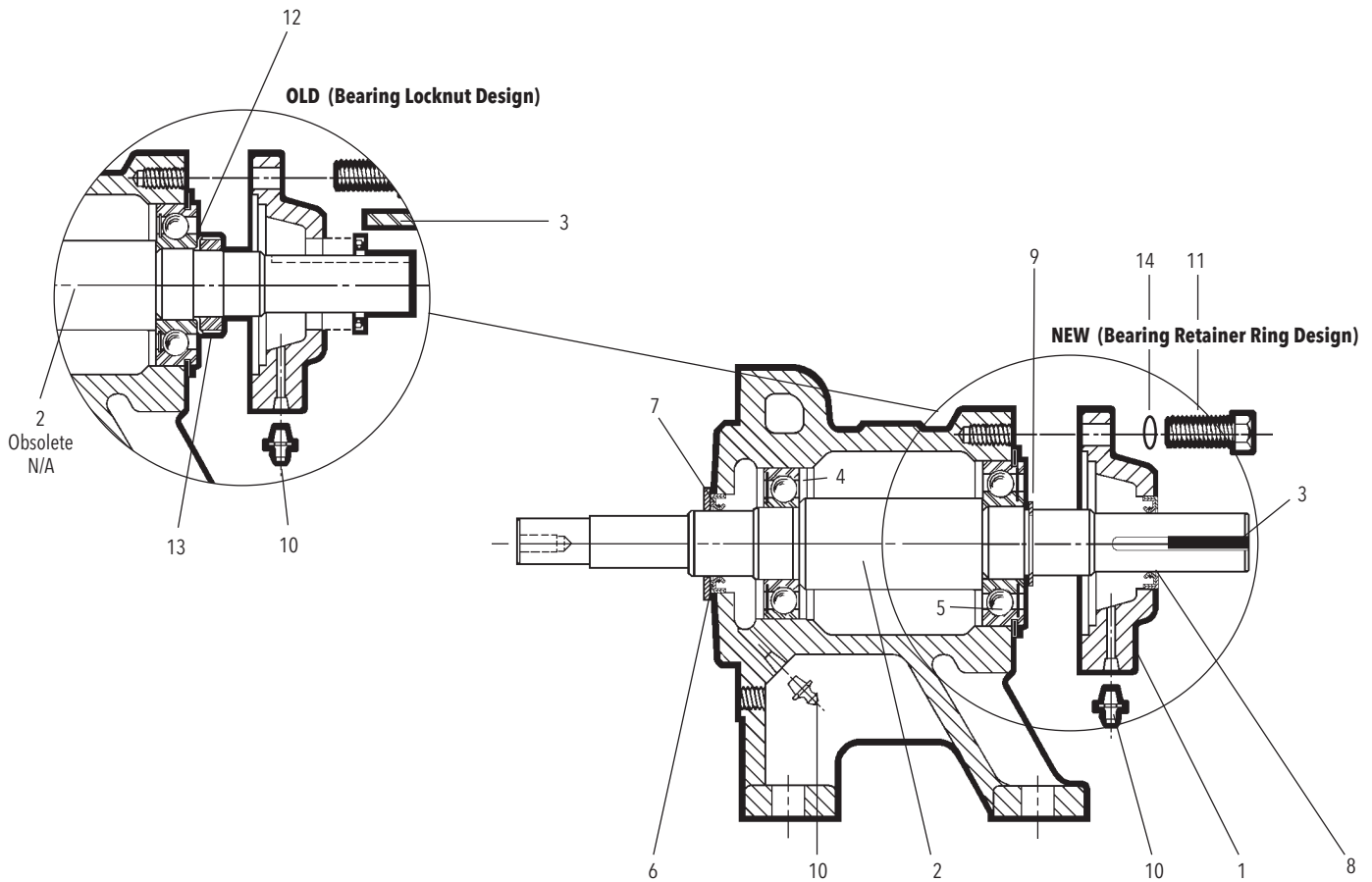
For parts pricing and package stock quantities refer to published parts price list using "K" part no. listed above.

Shaft and mounting face duplicates NEMA 184JM dimensions.

M&L-GROUP POWER FRAME

3756/3757/SSH M&L-Group

For models 3756, 3757 and SSH mechanical seal pumps and 3756 packed box pumps.



Commercial Water Systems

M&L-GROUP POWER FRAME REPAIR PARTS

3756/3757/SSH M&L-Group

For models 3756, 3757 and SSH mechanical seal pumps and 3756 packed box pumps.

M-Group:

| ITEM NO. | PART NO. | DESCRIPTION | MATERIAL | PATTERN NO. |
|----------|----------|--|-------------------|-------------|
| | 14L60 | Power Frame Complete, Mechanical Seal Pump | | |
| | 15K6 | Power Frame Complete, Packed Box Pump | | |
| 1 | 1K147 | Bearing cover | Cast iron | 59056 |
| 2 | 4K411 | Shaft - mechanical seal version | Steel | |
| | 4K453 | Shaft - packed box version | Steel | |
| 3 | 4K292 | Shaft key - motor end | Steel | |
| 4 | 4K293 | Ball bearing - inboard | Steel | |
| 5 | 4K556 | Ball bearing - outboard | Steel | |
| 6 | 5K163 | Deflector | BUNA-N | |
| 7 | 5K164 | Lip seal - inboard | BUNA/Steel | |
| 8 | 5K164 | Lip seal - mechanical seal | BUNA/Steel | |
| | 5K280 | Lip seal - packed box | BUNA/Steel | |
| 9 | 5K246 | Retaining ring | Steel | |
| 10 | 6K80 | Grease fitting - frame and bearing cover | Steel | |
| 11 | 13K80 | Hex head cap screw - $\frac{3}{8}$ " - 16 x 1.25 | Zinc-Plated Steel | |
| 12 | 13K183 | Lockwasher | Zinc-Plated Steel | |
| 13 | 13K184 | Locknut | Zinc-Plated Steel | |
| 14 | 13K158 | Lockwasher $\frac{3}{8}$ " | Zinc-Plated Steel | |

For parts pricing and package stock quantities refer to published parts price list using "K" part no. listed above.

Shaft and mounting face duplicates NEMA 254JM dimensions.

L-Group:

| ITEM NO. | PART NO. | DESCRIPTION | MATERIAL | PATTERN NO. |
|----------|----------|--|-------------------|-------------|
| | 15K7 | Power Frame Complete (Mechanical Seal or Packed Box) | | |
| 1 | 1K147 | Bearing cover | Cast iron | 59056 |
| 2 | 4K454 | Shaft | Steel | |
| 3 | 4K292 | Shaft key - motor end (not shown) | Steel | |
| 4 | 4K293 | Ball bearing - inboard | Steel | |
| 5 | 4K469 | Ball bearing - outboard | Steel | |
| 6 | 5K163 | Deflector | BUNA-N | |
| 7 | 5K164 | Lip seal - inboard | BUNA/Steel | |
| 8 | 5K280 | Lip seal - outboard | BUNA/Steel | |
| 9 | 5K246 | Retaining ring | Steel | |
| 10 | 6K80 | Grease fitting - frame and bearing cover | Zinc-Plated Steel | |
| 11 | 13K80 | Hex head cap screw - bearing cover | Zinc-Plated Steel | |
| 14 | 13K158 | Lockwasher $\frac{3}{8}$ " | Zinc-Plated Steel | |

For parts pricing and package stock quantities refer to published parts price list using "K" part no. listed above.

Xylem |'zīləm|

- 1) The tissue in plants that brings water upward from the roots;
- 2) a leading global water technology company.

We're a global team unified in a common purpose: creating innovative solutions to meet our world's water needs. Developing new technologies that will improve the way water is used, conserved, and re-used in the future is central to our work. We move, treat, analyze, and return water to the environment, and we help people use water efficiently, in their homes, buildings, factories and farms. In more than 150 countries, we have strong, long-standing relationships with customers who know us for our powerful combination of leading product brands and applications expertise, backed by a legacy of innovation.

For more information on how Xylem can help you, go to www.xyleminc.com



Xylem Inc.
2881 East Bayard Street Ext., Suite A
Seneca Falls, NY 13148
Phone: (800) 453-6777
Fax: (888) 322-5877
www.gouldswatertechnology.com

Goulds is a registered trademark of Goulds Pumps, Inc. and is used under license.
© 2015 Xylem Inc. R36/3756 R1 September 2015