



MARCH PUMPS

1819 PICKWICK AVE., GLENVIEW, IL 60026-1306, U.S.A
 PHONE: (847) 729-5300 - FAX: (847) 729-7062
 WWW.MARCHPUMP.COM

BEER PUMPS 815 Series

DESCRIPTION:

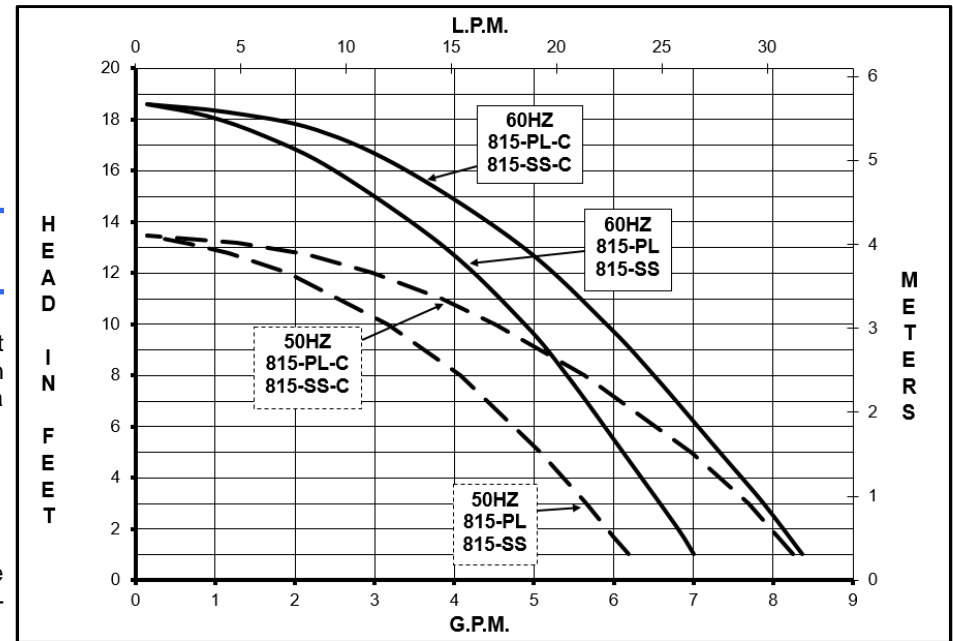
The March beer pump is a non-self-priming magnetic drive unit built specifically to handle hot wort and water. The unit requires liquid being pumped to lubricate the internal parts. If the pump is run dry for a period of time the impeller and shaft may become damaged. To regulate the flow use a valve on the discharge/outlet.

ELECTRICAL:

All models have an air cooled 1 phase motor and have a 6 foot cord with plug.

LIMITED WARRANTY:

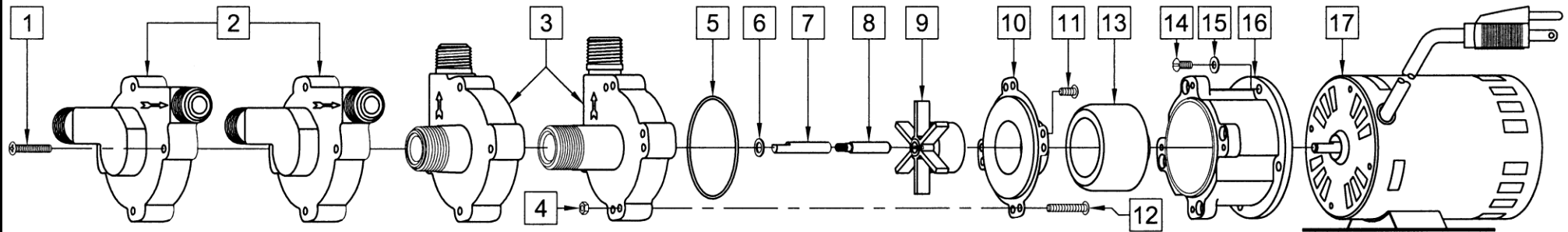
March pumps are guaranteed only against defects in workmanship or materials for a period of one year from date of manufacture pumping water. Register online at www.marchpump.com/warranty-registration



SPECIFICATIONS	815-PL-C				815-SS-C				815-PL				815-SS							
	815-PL-C				815-SS-C				815-PL				815-SS							
Product #	115 V				0809-0196-0800				0809-0196-0900				0809-0196-0600				0809-0196-0700			
	Polysulfone, Center Inlet				Stainless, Center Inlet				Polysulfone, Inline				Stainless, Inline							
UNITS	60 Hz		50 Hz		60 Hz		50 Hz		60 Hz		50 Hz		60 Hz		50 Hz					
Max Flow	8 gpm		30 lpm		8 gpm		30 lpm		7 gpm		22.7 lpm		7 gpm		22.7 lpm					
Max Head	18.6 ft. / 8.05 psi		4.1 m		18.6 ft. / 8.05 psi		4.1 m		18.6 ft. / 8.05 psi		4.1 m		18.6 ft. / 8.05 psi		4.1 m					
Inlet	3/8" FPT & 3/4" MPT				3/4" MPT				1/2" MPT				1/2" MPT							
Outlet	1/2" MPT				1/2" MPT				1/2" MPT				1/2" MPT							
Max Internal Pressure	50 psi / 3.4 bar				150 psi / 10 bar				50 psi / 3.4 bar				150 psi / 10 bar							
Max Liquid Temperature	250 °F / 121 °C				250 °F / 121 °C				250 °F / 121 °C				250 °F / 121 °C							
Packed Weight	5 lbs / 2.3 kg				6 lbs / 2.7 kg				5 lbs / 2.3 kg				6 lbs / 2.7 kg							
ELECTRICAL 60 Hz	W	A	Hp	Rpm	W	A	Hp	Rpm	W	A	Hp	Rpm	W	A	Hp	Rpm				
115 V	122	1.4	1/25	3450	122	1.4	1/25	3450	122	1.4	1/25	3450	122	1.4	1/25	3450				
ELECTRICAL 50 Hz	W	A	kW	Rpm	W	A	kW	Rpm	W	A	kW	Rpm	W	A	kW	Rpm				
115 V	129	1.4	0.029	2850	129	1.4	0.029	2850	129	1.4	0.029	2850	129	1.4	0.029	2850				
Overall Pump Size	Height	Width	Length	Height	Width	Length	Height	Width	Length	Height	Width	Length	Height	Width	Length	Height				
Inches	4.37	3.50	8.43	4.50	3.50	8.62	3.62	4.88	7.75	4.87	3.33	7.74	4.87	3.33	7.74	4.87				
cm	11.0	8.8	21.4	11.4	8.8	21.8	9.1	12.3	19.6	12.3	8.4	19.6	12.3	8.4	19.6	12.3				

All specifications & data are based on pumping water & are intended as a guideline only. Specifications may vary with different motors.

PARTS LIST



#	DESCRIPTION	MATERIAL		SIZE (Inches)	QTY.	PART #	
		815-SS-C	815-SS			815-SS-C	815-SS
1	Screw	Stainless	Stainless	#8-32 x 1 Lg.	4	0809-0205-1000	0809-0205-1000
2	Pump Housing (Inline)		Stainless	Inline Inlet & Outlet	1		0809-0211-0010
3	Pump Housing (Center Inlet)	Stainless		Center Inlet	1	0809-0150-0010	
4	Hex Nut	Stainless		#8-32	4	0991-0004-1000	
5	"O" Ring	Silicone		0.070 CS x 2.441 ID	1	0809-0165-1000	0809-0165-1000
6	Thrust Washer	Teflon			1		0809-0043-1000
8	*Shaft	Stainless		Left-Hand Thread	1	0809-0214-1000	0809-0214-1000
9	Impeller	Ryton/Teflon/Glass		2-5/32 Dia.	1		0809-0107-0200
10	Rear Housing	Stainless			1		0809-0012-1000
11	Screw	Stainless		#8-32 x 3/8 Lg.	4		0135-0040-1000
12	Screw	Stainless		#8-32 x 1 Lg.	4	0809-0205-1000	
13	Drive Magnet				1		0125-0083-0100
14	Screw	Stainless		#8-32 x 3/8 Lg.	4		0135-0040-1000
15	Washer	Stainless			4		0858-0004-1000
16	Motor Bracket	Plastic			1		0809-0058-1000
17	Motor 115 V, 50/60 Hz w/base			6 foot cord w/plug	1		0809-0196-1000

#	DESCRIPTION	MATERIAL		SIZE (Inches)	QTY.	PART #	
		815-PL-C	815-PL			815-PL-C	815-PL
1	Screw	Steel	Steel	#8-32 x 1 Lg.	4	0923-0003-1000	0923-0003-1000
2	Pump Housing (Inline)		Polysulfone	Inline Inlet & Outlet	1		0809-0079-0100
3	Pump Housing (Center Inlet)	Polysulfone		Center Inlet	1	0809-0179-0100	
5	"O" Ring	Silicone		1/16 CS x 2-3/8 ID	1		0809-0027-1000
6	Thrust Washer	Teflon			1		0809-0043-1000
7	*Shaft	Stainless		"D" Flat	1		0809-0161-1000
9	Impeller	Ryton/Teflon/Glass		2-5/32 Dia.	1		0809-0107-0200
10	Rear Housing	Stainless			1		0809-0012-1000
11	Screw	Stainless		#8-32 x 3/8 Lg.	4		0135-0040-1000
13	Drive Magnet				1		0125-0083-0100
14	Screw	Stainless		#8-32 x 3/8 Lg.	4		0135-0040-1000
15	Washer	Stainless			4		0858-0004-1000
16	Motor Bracket	Plastic			1		0809-0058-1000
17	Motor 115 V, 50/60 Hz w/base			6 foot cord w/plug	1		0809-0196-1000

NOTE: Contact Factory for other materials and/or parts not listed.

0750-0976-1000 R9

*Check shaft type before ordering replacement parts.