



MARCH PUMPS 893 BRUSHLESS

1819 PICKWICK AVE., GLENVIEW, IL 60026-1306, U.S.A
 PHONE: (847) 729-5300 - FAX: (847) 729-7062
 WWW.MARCHPUMP.COM

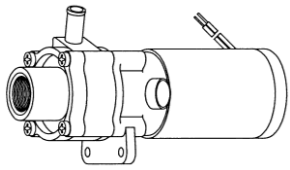
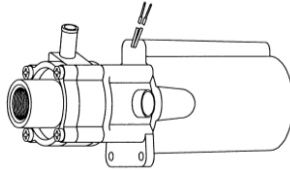
12 VDC Ametek Motor
 893-07 & 893-09

DESCRIPTION:

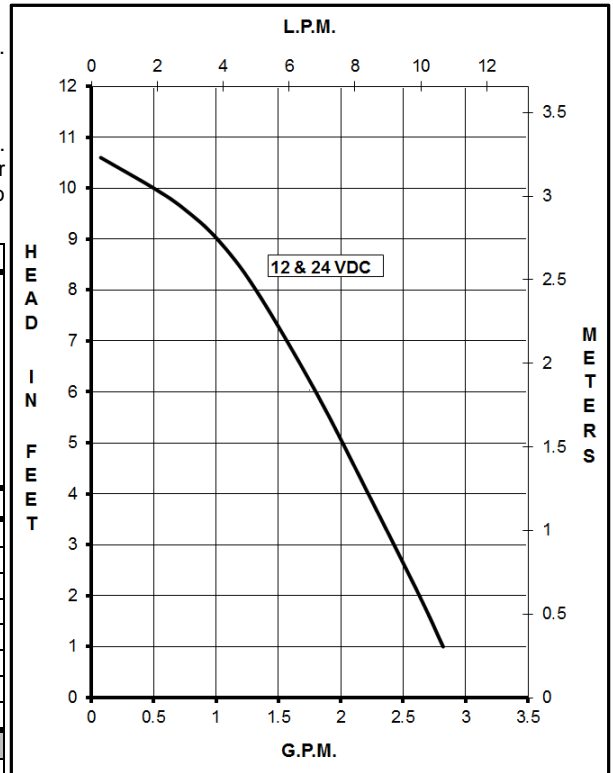
Series 893 are centrifugal magnetic drive pumps, eliminating the need for a shaft seal. Pumps can be serviced with a screwdriver. See the parts list for a breakdown of parts.

OPERATION:

Pumps are not self-priming, lack a suction lift, and thus require a **flooded suction**. Pumps **cannot be run dry** because the impeller requires the liquid being pumped for lubrication. Brushless motors must be operated within a restricted voltage range due to the electronics in the motor. For application assistance, contact March Pump.

MODELS & SPECIFICATIONS	893-07					893-09				
										
	Open Air					Submersible				
Product #	0893-0061-0100					0893-0061-0200				
Max Flow	2.7 gpm - 11 lpm					2.7 gpm - 11 lpm				
Max Head	10.6 ft / 4.5 psi - 3.3 m					10.6 ft / 4.5 psi - 3.3 m				
Inlet	3/8" FPT					3/8" FPT				
Outlet	3/8" OD					3/8" OD				
Max Internal Pressure	50 psi - 344 kPa					50 psi - 344 kPa				
Max Liquid Temperature	190 °F open air 87 °C open air					120 °F sub 49 °C sub				
Packed Weight	1.0 lbs / 0.45 kg					1.2 lbs / 0.54 kg				
ELECTRICAL	A	W	Hp	kW	Rpm	A	W	Hp	kW	Rpm
Restricted Range 12 V	1.5	12	1/150	0.004	4000	1.5	12	1/150	0.004	4000
Overall Size	Height	Width	Length							
	2.96"	1.85"	5.21"	2.96"	3.00"	6.00"				
	7.5 cm	4.6 cm	13.2 cm	7.5 cm	7.6 cm	15.2 cm				
Materials in Contact With Solution	Noryl, Nylon, Carbon/Teflon, Buna N, 316 Stainless Steel, Ceramic Magnet.					When pump is submerged the following additional materials are in contact: Epoxy, Delrin, & Motor Leads				

All specifications & data are based on pumping water & are intended as a guideline only. Specifications may vary with different motors.



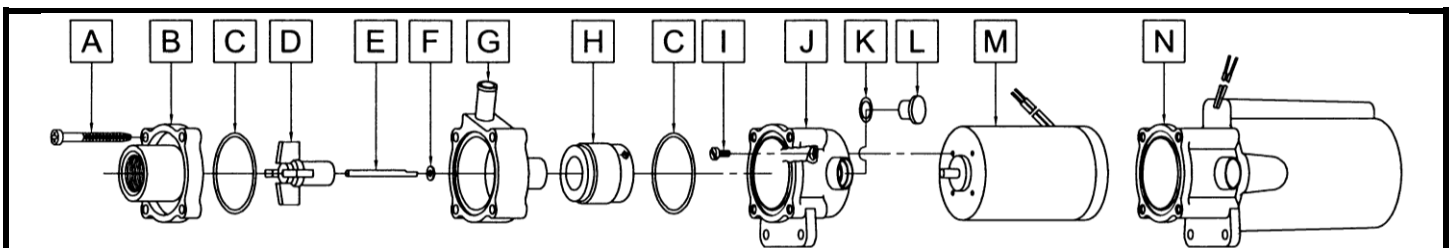
ELECTRICAL:

Motors are Brushless DC. 12 Volt Motor
 Restricted Voltage Range (7V to 14V)
 Red lead is positive, blue lead is negative

893-07 have 13" (33 cm) motor leads.
 893-09 have 10" (25 cm) motor leads.

LIMITED WARRANTY:

March pumps are guaranteed only against defects in workmanship or materials for a period of one year from date of manufacture pumping water. For the complete warranty and to register online go to www.marchpump.com/warranty-registration



#	DESCRIPTION	MATERIAL	SIZE (Inches)	QTY.	893-07	893-09
A	Screws, Self-Tapping	Stainless	#7-19 x 1-7/16 Lg.	4	0115-0062-1000	
B	Cover	Noryl	3/8 FPT Inlet	1	0893-0004-1000	
C	"O" Ring	Buna N	1/16 CS x 1-7/16 OD	2	0115-0018-1000	
D	Impeller	Nylon/Ceramic Magnet		1	0115-0008-0100	
E	Shaft	316 Stainless		1	0115-0032-1000	
F	Thrust Washer (Rear)	Carbon/Teflon		1	0115-0033-1000	
G	Rear Housing	Noryl	3/8 OD Outlet	1	0893-0003-1000	
H	Drive Magnet			1	0115-0101-0100	
I	Screws	Stainless	0.118 x 0.5 x 0.236 Lg.	4	0893-0029-1000	
J	Motor Bracket	Plastic		1	0893-0035-1000	
K	"O" Ring	Viton	1/16 CS x 7/16 OD	1	0210-0008-1000	
L	Plug	Plastic		1	0125-0110-1000	
M	Motor (Ametek) 12 VDC Brushless			1	0893-0058-1000	
N	Submersible Assy. 12 VDC Brushless			n/a		Not Available

NOTE: Contact Factory for other materials and/or parts not listed.

0893-0037-1100