



MARCH PUMPS

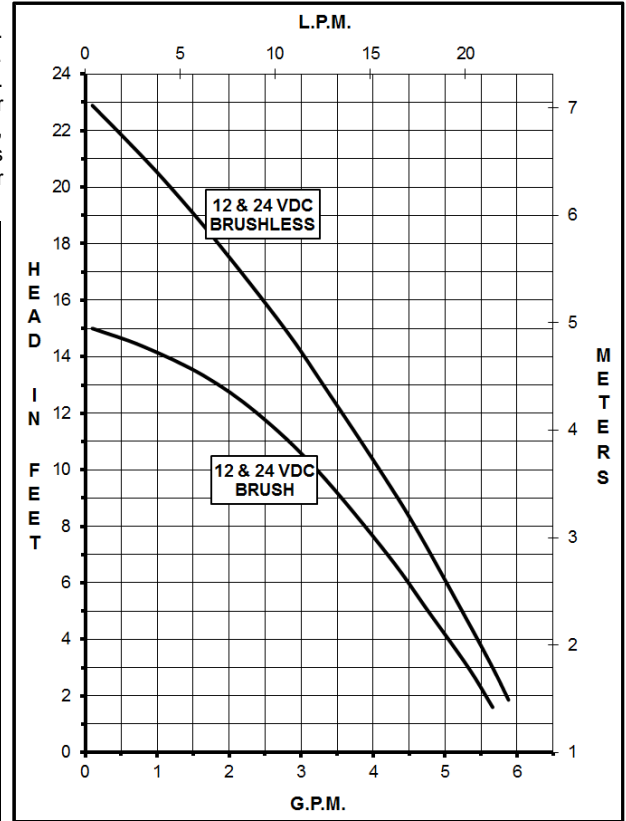
1819 PICKWICK AVE., GLENVIEW, IL 60026-1306, U.S.A
 PHONE: (847) 729-5300 - FAX: (847) 729-7062
 WWW.MARCHPUMP.COM

DC Brushless BC-2CP-MD DC Brush BC-2CP-MD

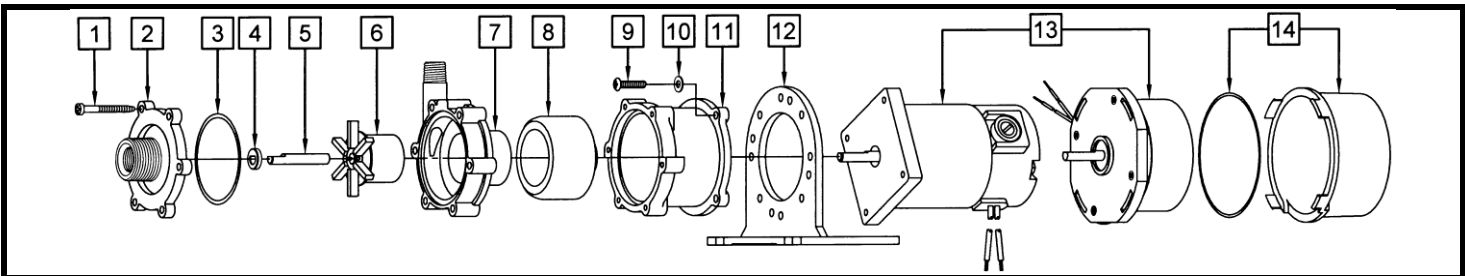
DESCRIPTION & OPERATION:

Series 2 are centrifugal magnetic drive pumps, eliminating the need for a shaft seal. Pumps can be serviced with a screwdriver. See the parts list for a breakdown of parts. Pumps are not self-priming, lack a suction lift, and thus require a **flooded suction**. Pumps **cannot be run dry** because the impeller requires the liquid being pumped for lubrication. For liquids with a specific gravity greater than water, have a higher viscosity, or for elevated temperatures, a trimmed impeller may be necessary. Brushless motors must be operated within a restricted voltage range due to the electronics. For application assistance, contact March Pump.

SPECIFICATIONS	BC-2CP-MD (12V & 24V DC)			
	Brush		Brushless	
Models (Motor Style)	Brush		Brushless	
Max Flow	6 gpm - 22.7 lpm			
Max Head	15 ft / 6.5 psi - 4.6 m		23 ft / 9.9 psi - 7 m	
Inlet - Outlet	3/8" FPT & 3/4" MPT - 1/4" MPT			
Max Internal Pressure	50 psi - 344 kPa			
Max Liquid Temperature	190 °F / 87 °C			
Motor Type	12 V DC	24 V DC	12 V DC	24 V DC
Watts - Amps	43 - 3.5	43 - 1.8	38 - 3.1	38 - 1.6
Restricted Voltage Range			10V to 14V	20V to 28V
Hp / Kw - Rpm	1/25 / 0.029 - 3650			
Electrical Connection	9" Leads		12" Leads	
Overall Size (H x W x L)	4.44" x 4.50" x 7.61"		4.44" x 4.50" x 5.46"	
Packed Weight	4 lbs / 1.8 kg		2 lbs / 0.9 kg	
Materials in Contact with Solution: Polypropylene, Ceramic & Viton				
The red lead is positive & blue lead is negative.				



LIMITED WARRANTY: March pumps are guaranteed only against defects in workmanship or materials for a period of one year from date of manufacture pumping water. For the complete warranty and to register online go to www.marchpump.com/warranty-registration



NOTE: When attaching the Drive Magnet to the motor shaft, position the face of the Drive Magnet 1/16 inch below the face of the Motor Bracket.

#	DESCRIPTION	MATERIAL	SIZE (Inches)		QTY.	Brush BC-2CP-MD	Brushless BC-2CP-MD
			Brush	Brushless			
1	Self-Tapping Screw	Stainless	#7-19 x 1-7/16 Lg.		6	0115-0062-1000	
2	Cover	Polypropylene	3/8 FPT x 3/4 MPT		1	0125-0056-1000	
3	"O" Ring	Viton	3/32 CS x 2-3/16 OD		1	0125-0065-1000	
		Buna N (Option)	3/32 CS x 2-3/16 OD		1	0125-0066-1000	
4	Thrust Washer	Ceramic			1	0130-0028-1000	
5	Shaft	Ceramic			1	0125-0061-1000	
		Stainless (Option)			1	0125-0125-1000	
6	Impeller Encapsulated	Polypropylene			1	0125-0087-0200	
7	Rear Housing	Polypropylene	1/4 MPT		1	0125-0058-1000	
8	Drive Magnet		0.250 Bore	6mm	1	0125-0083-0100	0125-0083-0200
9	Screw	Stainless	#8-32 x 3/4 Lg.		4	0210-0036-1000	
10	Washer	Stainless	#8		4	0858-0004-1000	
11	Motor Bracket	Plastic			1	0125-0069-1000	
12	Base	Plastic			1	0125-0106-1000	
13	Motor, 12 V DC				1	0809-0101-1000	0125-0127-1000
	Motor, 24 V DC				1	0809-0103-1000	0125-0128-1000
14	Cover & "O" Ring (Option)		1/16 CS x 3 OD		1		0125-0133-1000

NOTE: Contact Factory for other materials and/or parts not listed.

0125-0076-1100 R2