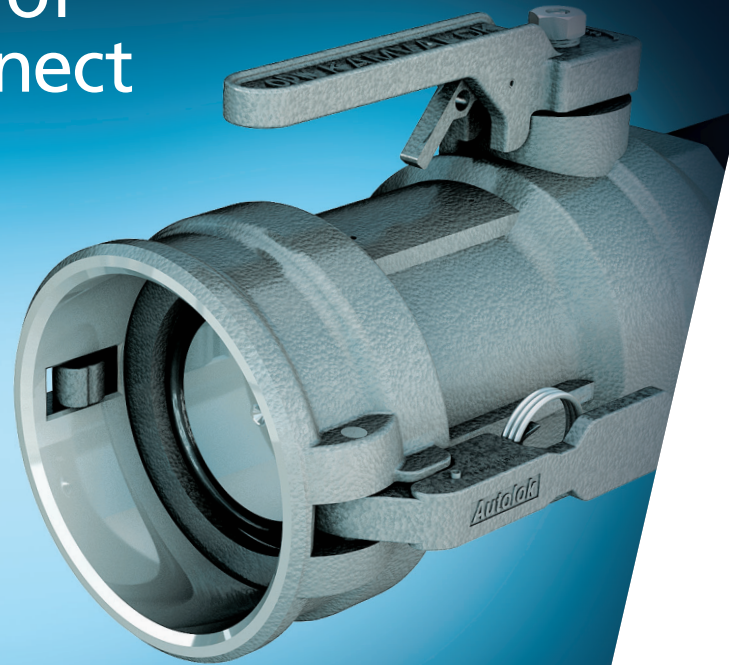
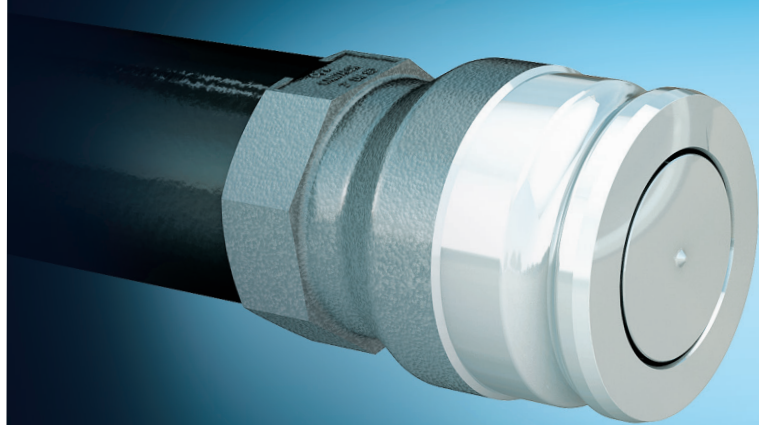


NEW KAMVALOK® FLAT-FACE COUPLER

Reduces up to 85% of Fluid Loss at Disconnect



Kamvalok® Flat-Face
Dry Disconnect Coupler

Flat-Out Better Spill Prevention



The new Kamvalok® Flat is the next generation of OPW dry-disconnect couplings. We've taken our proven, best-in-class Kamvalok and flattened the connection points. This effectively eliminates all cavities where liquid can pool and subsequently spill upon disconnection.

Features & Benefits:

- **REDUCE PRODUCT LOSS** at disconnect by up to 85%
- **NEW** patent-pending smooth, flat-face poppets
- **INDUSTRY-STANDARD** locking handle
- **EASY TO CLOSE** Autolok™ locking arms
- **AUTOMATIC LOCKING ARMS**, no pins or buttons
- **VIBRATION-RESISTANT** Twin-Kam™ arms



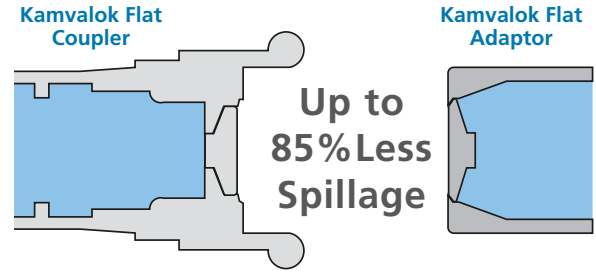
opw-es.com

ENGINEERING | WHAT'S NEXT

Kamvalok® Flat

Dry-Disconnect Coupler Design

Kamvalok Flat reduces product loss at disconnect by **up to 85%** compared to our already high-performing standard Kamvalok.



*Percentage of fluid loss at disconnect varies depending on the size of the Kamvalok and if it is vertically or horizontally positioned.

Coupler Ordering Information

Type
17 - Coupler

Configuration
1 - Aluminum Body, Duplex Stainless-Steel Internals
7 - Stainless-Steel Body, Duplex Stainless-Steel Internals

Size
15 - 1-1/2" DN40 30 - 3" DN80
20 - 2" DN50

1711DL - AL15 - GL* - FLAT

O-Ring Seal
1 - Buna-N 4 - EPDM
2 - Fluorocarbon 6 - FFKM
3 - PTFE/Silicone 7 - PTFE/Fluorocarbon

DL - FNPT
DBL - FBSPT

Construction Material
AL - Aluminum Body (ASTM A356-T6 B-26)
SS - Stainless-Steel Body (ASTM A351 CF3M 316L)

Style
* - Leave blank for FNPT
A - 150-lb. Flange
GL - Greaseless
KL - Keylok
T - 300-lb. Flange

***Simply add "FLAT" to the end of any standard Kamvalok Coupler Order**

Adaptor Ordering Information

Type
16 - Adaptor

Configuration
1 - Aluminum Body, Duplex Stainless-Steel Internals
7 - Stainless-Steel Body, Duplex Stainless-Steel Internals

Size
15 - 1-1/2" (DN40)
20 - 2" (DN50)
30 - 3" (DN80)

1611AN - AL15 - GL* - FLAT

O-Ring Seal
1 - Buna-N 4 - EPDM
2 - Fluorocarbon 3 - PTFE/Silicone 6 - FFKM
7 - PTFE/Fluorocarbon

Connection
ANF - 150-lb. Flange
AN - Female NPT
ANFT - 300-lb. Flange
ABN - Female BSPT

Construction Material
AL - Aluminum Body
SS - Stainless-Steel Body

Style
GL - Greaseless
KG - Krytox Grease
KL - Keylok

***Simply add "FLAT" to the end of any standard Kamvalok Adaptor Order**

Design Parameters

Max Design Pressure	1-1/2" Size - 210 psig (15 bar) 2" Size - 150 psig (10.5 bar) 3" Size - 120 psig (8.5 bar)
Temperature Range	<ul style="list-style-type: none"> Buna-N -20°F – 250°F (-29°C – 121°C) Fluorocarbon -20°F – 400°F (-29°C – 204°C) PTFE Encapsulated Silicone -15°F – 400°F (-26°C – 204°C) EPDM -50°F – 250°F (-46°C – 121°C) FFKM -15°F – 400°F (-26°C – 204°C)

Materials

Body, Poppet, Seal Cylinder	Aluminum, Stainless Steel
Shaft Link, Cam Arms, Poppet Link	Stainless Steel



www.opw-es.com | 2726 Henkle Drive | Lebanon, Ohio 45036 | Phone: (513) 932 9114 | Fax: (513) 932 9845

NOTE: All information subject to engineering and/or other changes. All trade names are copyrighted. Patents Pending. ©2018 OPW Engineered Systems. ©2018 Delaware Capital Formation, Inc. All Rights Reserved. DOVER and the DOVER logo are registered trademarks of Delaware Capital Formation, Inc., a wholly-owned subsidiary of Dover Corporation.